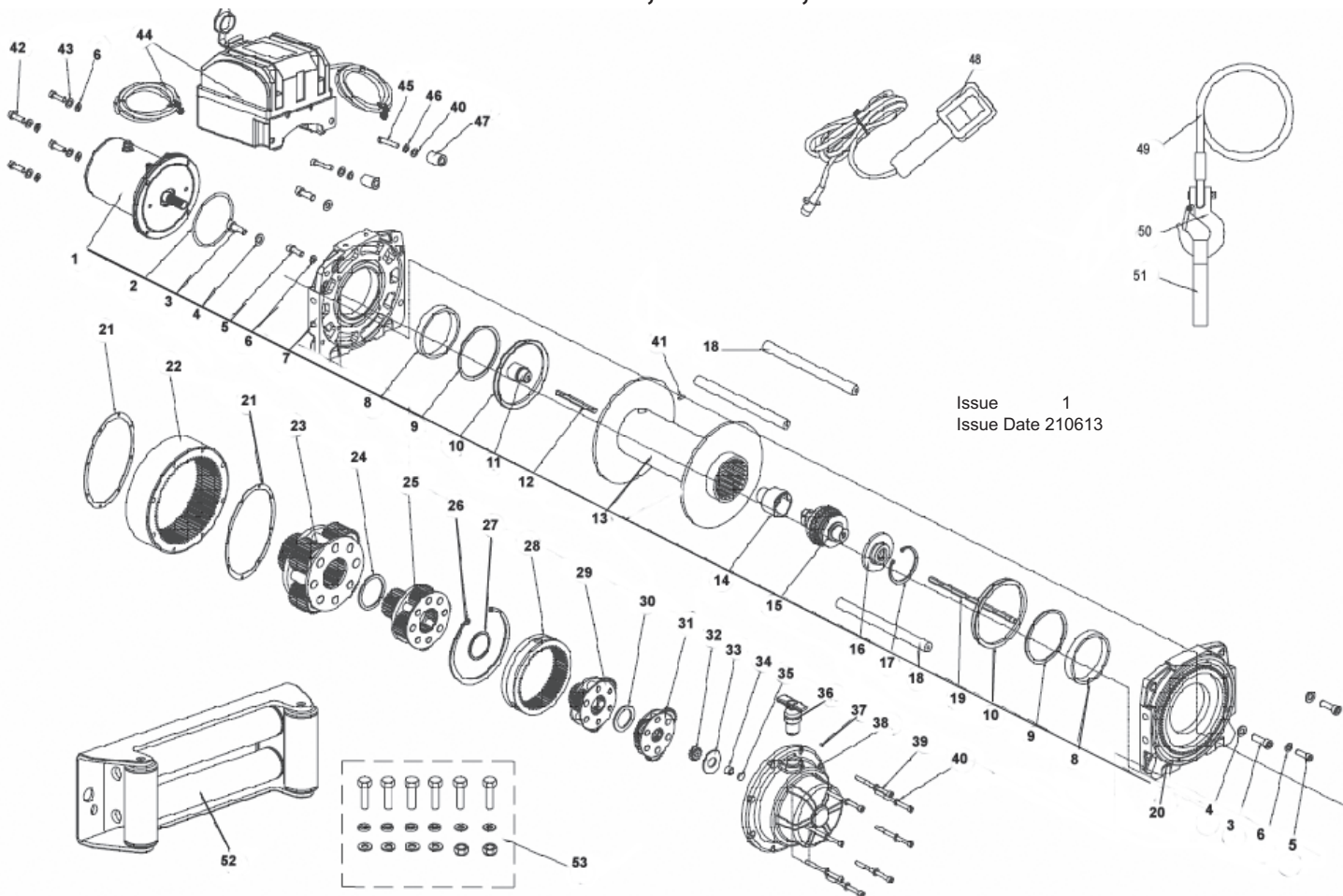


### MODELS: RW5675, RW6815, RW8180



Issue 1  
Issue Date 210613

ITEM	PART NO.	DESCRIPTION	ITEM	PART NO.	DESCRIPTION
1	RW8180.01	MOTOR ASSEMBLY	29	RW8180.29	STAGE PLANETARY GEAR ASS'Y (2nd)
2	RW8180.02	O-RING	30	RW8180.30	REDUCE WASHER (RUBBER)
3	RW8180.03	HEX SOCKET CAP SCREW (M10x30)	31	RW8180.31	STAGE PLANETARY GEAR ASS'Y (1st)
4	RW8180.04	SPRING WASHER	32	RW8180.32	STAGE GEAR (1st)
5	RW8180.05	HEX SOCKET CAP SCREW (M8x30)	33	RW8180.33	REDUCE WASHER (RUBBER)
6	RW8180.06	SPRING WASHER	34	RW8180.34	SLIDE BEARING (III)
7	RW8180.07	FRAME FOR MOTOR	35	RW8180.35	REDUCE WASHER COVER
8	RW8180.08	SLIDING BEARING (I)	36	RW8180.36	CLUTCH
9	RW8180.09	NYLON WASHER	37	RW8180.37	HEX SOCKET SET SCREW (M4)
10	RW8180.10	SEAL RING	38	RW8180.38	GEARBOX BODY
11	RW8180.11	MOTOR-CONNECTOR	39	RW8180.39	SPRING WASHER
12	RW8180.12	HEX SHAFT (I)	40	RW8180.40	HEX SOCKET CAP SCREW (M6x85)
13	RW8180.13	DRUM	41	RW8180.41	HEX SOCKET SET SCREW (M8)
14	RW8180.14	BRAKE-CONNECTOR	42	RW8180.42	HEX SOCKET CAP SCREW (M8x25)
15	RW8180.15	BRAKE ASSEMBLY	43	RW8180.43	FLAT WASHER
16	RW8180.16	BEARING BOX (I)	44	RW8180.44	CONTROL BOX
17	RW8180.17	RETAINING RING	45	RW8180.45	HEX SOCKET CAP SCREW (M6x25)
18	RW8180.18	CLUTCH BAR	46	RW8180.46	FLAT WASHER
19	RW8180.19	HEX SHAFT (II)	47	RW8180.47	WASHER
20	RW8180.20	GEARBOX FRAME	48	RW8180.48	REMOTE CONTROL
21	RW8180.21	SEAL (II)	49	RW5675.WR	RW5675 WIRE ROPE 10.3mm x 29m (FOR RW5675)
22	RW8180.22	STAGE GEAR RING (4th)	49	RW6815.WR	RW6815 WIRE ROPE 11.5mm x 28m (FOR RW6815)
23	RW8180.23	STAGE PLANETARY GEAR ASS'Y (4th)	49	RW8180.WR	RW8180 WIRE ROPE 13mm x 25m (FOR RW8180)
24	RW8180.24	REDUCE WASHER (RUBBER)	50	WH.04	WINCH HOOK 1/2" (FOR RW8180)
25	RW8180.25	STAGE PLANETARY GEAR ASS'Y (3rd)	50	WH.03	WINCH HOOK 3/8" (FOR RW6815)
26	RW8180.26	RETAINING RING	51	RW8180.51	HAND SAVER STARP
27	RW8180.27	REDUCE WASHER (RUBBER)	52	RW8180.52	FAIRLEAD ROLLER
28	RW8180.28	STAGE GEAR RING (3rd)	53	RW8180.53	HARDWARE KIT

**NOTE:** It is our policy to continually improve products and as such we reserve the right to alter data, specifications and component parts without prior notice.

**IMPORTANT:** No liability is accepted for incorrect use of product.

**WARRANTY:** Guarantee is 12 months from purchase date, proof of which will be required for any claim.

**INFORMATION:** For a copy of our latest catalogue and promotions call us on 01284 757525 and leave your full name and address, including postcode.