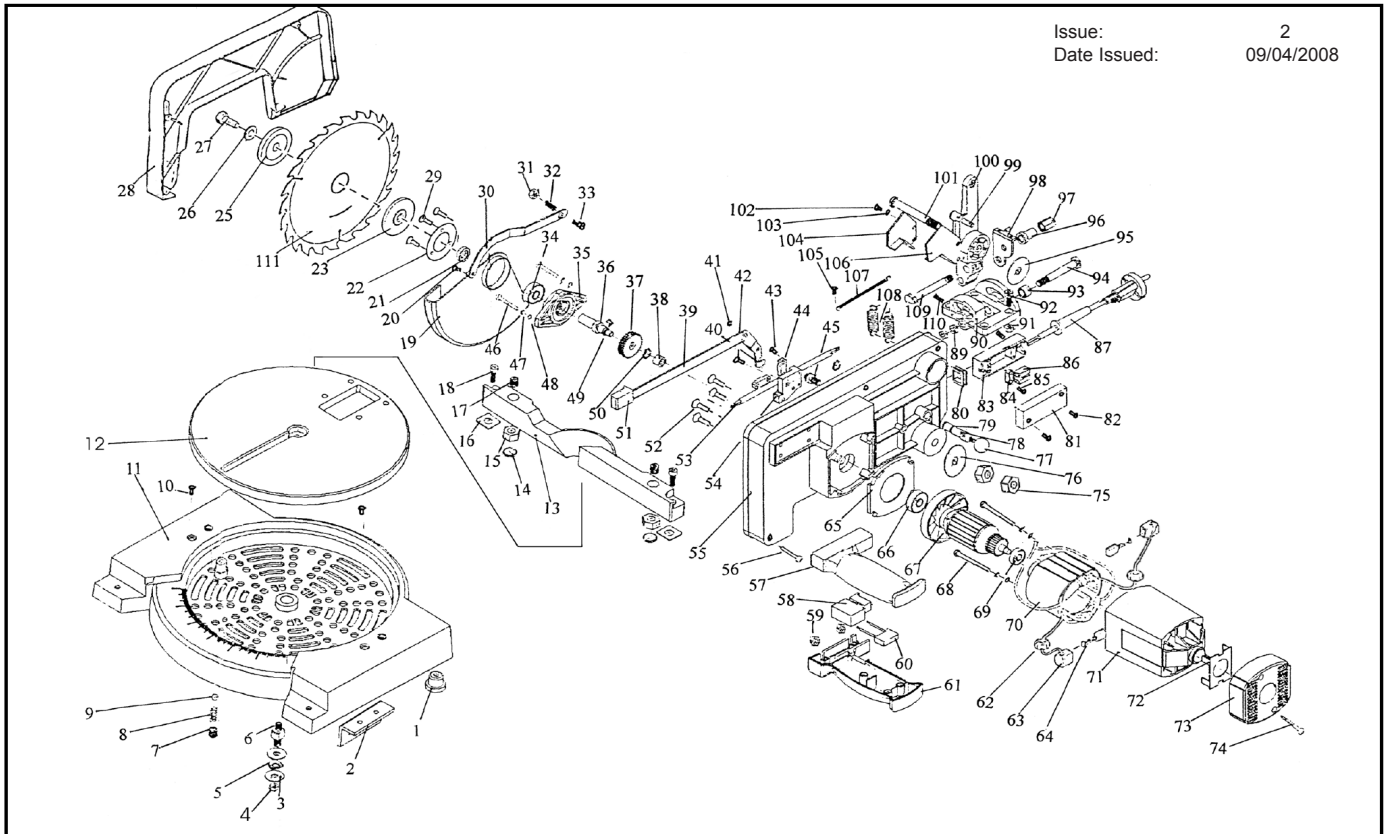


PARTS LIST FOR: COMPOUND MITRE SAW

Model: **SM8.V2**

Issue: 2
Date Issued: 09/04/2008



ITEM	PART NO.	DESCRIPTION	ITEM	PART NO.	DESCRIPTION	ITEM	PART NO.	DESCRIPTION
1	SM8.V2-01	FOOT PAD	39	SM8.V2-39	LINK (a)	76	SM8.V2-76	LARGE WASHER
2	SM8.V2-02	BRACKET	40	SM8.V2-40	LINK (b)	77	SM8.V2-77	FIX PIN HANDLE
3	SM8.V2-03	LARGE WASHER	41	SM8.V2-41	EXT RET RING	78	SM8.V2-78	FIX PIN
4	SM8.V2-04	HEXAGON NUT	42	SM8.V2-42	PAN HEAD SCREW	79	SM8.V2-79	O-RING
5	SM8.V2-05	WASHER	43	SM8.V2-43	PAN HEAD SCREW	80	SM8.V2-80	CABLE GUARD
6	SM8.V2-06	SHAFT	44	SM8.V2-44	CABLE CLAMP	81	SM8.V2-81	UPPER WIRE BOX
7	SM8.V2-07	HEXAGON SCREW	45	SM8.V2-45	BOLT	82	SM8.V2-82	PAN HEAD SCREW
8	SM8.V2-08	SPRING	46	SM8.V2-46	PAN HEAD SCREW	83	SM8.V2-83	LOWER WIRE BOX
9	SM8.V2-09	STEEL BALL	47	SM8.V2-47	RESILIENCE FLAKE	84	SM8.V2-84	CABLE CLAMP
10	SM8.V2-10	PAN HEAD SCREW	48	SM8.V2-48	FLAT WASHER	85	SM8.V2-85	SCREW
11	SM8.V2-11	BASE	49	SM8.V2-49	WOODRUFF KEY	86	SM8.V2-86	WIRE POLE
12	SM8.V2-12	TURN TABLE	50	SM8.V2-50	RETAINING RING	87	SM8.V2-87	CABLE GUARD
13	SM8.V2-13	GUIDE	51	SM8.V2-51	LOCK, OFF BUTTON	89	SM8.V2-89	HEXAGON NUT
14	SM8.V2-14	SCREW PAD	52	SM8.V2-52	SCREW	90	SM8.V2-90	BRACKET BASE
15	SM8.V2-15	HEXAGON NUT	53	SM8.V2-53	WIRE	91	SM8.V2-91	HEXAGON NUT
16	SM8.V2-16	GUIDE WASHER	54	SM8.V2-54	WIRE CLAMP BASE	92	SM8.V2-92	INNER HEXAGON SCREW
17	SM8.V2-17	INNER GUIDE SCREW (a)	55	SM8.V2-55	FRAME	93	SM8.V2-93	BRACKET SET RING
18	SM8.V2-18	INNER GUIDE SCREW (b)	56	SM8.V2-56	PAN HEAD SCREW	94	SM8.V2-94	BOLT
19	SM8.V2-19	BLADE GUARD	57	SM8.V2-57	UPPER HANDLE	95	SM8.V2-95	WEAR PLATE
20	SM8.V2-20	RIVET	58	SM8.V2-58	SWITCH	96	SM8.V2-96	THIMBLE
21	SM8.V2-21	WASHER	59	SM8.V2-59	HEXAGON NUT	97	SM8.V2-97	NUT
22	SM8.V2-22	FENCE BAFFLE	60	SM8.V2-60	CAPACITOR	98	SM8.V2-98	POINTER
23	SM8.V2-23	LOWER GUARD	61	SM8.V2-61	LOWER HANDLE	99	SM8.V2-99	PIN
25	SM8.V2-25	UPPER GUARD	62	SM8.V2-62	INDUCTANCE	100	SM8.V2-100	BRACKET
26	SM8.V2-26	WASHER	63	SM8.V2-63	BRUSH & COPPER COVER	101	SM8.V2-101	BOLT
27	SM8.V2-27	HEX BOLT M8x18 (LH THREAD)	64	SM8.V2-64	CARBON BRUSH	102	SM8.V2-102	PAN HEAD SCREW
28	SM8.V2-28	PLASTIC SIDE CASING	65	SM8.V2-65	FAN BAFFLE	103	SM8.V2-103	RESILIENCE FLAKE
29	SM8.V2-29	SCREW	66	SM8.V2-66	BEARING	104	SM8.V2-104	FENCE BAFFLE (LEFT)
30	SM8.V2-30	BLADE GUARD LINK	67	SM8.V2-67	ARMATURE	105	SM8.V2-105	PAN HEAD SCREW
31	SM8.V2-31	HEXAGON NUT	68	SM8.V2-68	PAN HEAD SCREW	106	SM8.V2-106	FENCE BAFFLE (RIGHT)
32	SM8.V2-32	LINK SPRING	69	SM8.V2-69	BEARING	107	SM8.V2-107	LINK SPRING
33	SM8.V2-33	SCREW	70	SM8.V2-70	STATOR	108	SM8.V2-108	RETURN SPRING
34	SM8.V2-34	BEARING	71	SM8.V2-71	HOUSING	109	SM8.V2-109	SCREW
35	SM8.V2-35	BEARING CASING	72	SM8.V2-72	REAR COVER BAFFLE	110	SM8.V2-110	SCREW
36	SM8.V2-36	MAIN DRIVE SHAFT	73	SM8.V2-73	HOUSING, REAR COVER	111	SM8.B24	BLADE, 205x30mm
37	SM8.V2-37	DRIVEN GEAR	74	SM8.V2-74	SCREW	112	SM8.V2-W	ADJUSTING WRENCH
38	SM8.V2-38	BEARING	75	SM8.V2-75	HEXAGON NUT			

NOTE: It is our policy to continually improve products and as such we reserve the right to alter data, specifications and component parts without prior notice.

IMPORTANT: No liability is accepted for incorrect use of product.

WARRANTY: Guarantee is 12 months from purchase date, proof of which will be required for any claim.

INFORMATION: For a copy of our latest catalogue and promotions call us on 01284 757525 and leave your full name and address, including postcode.