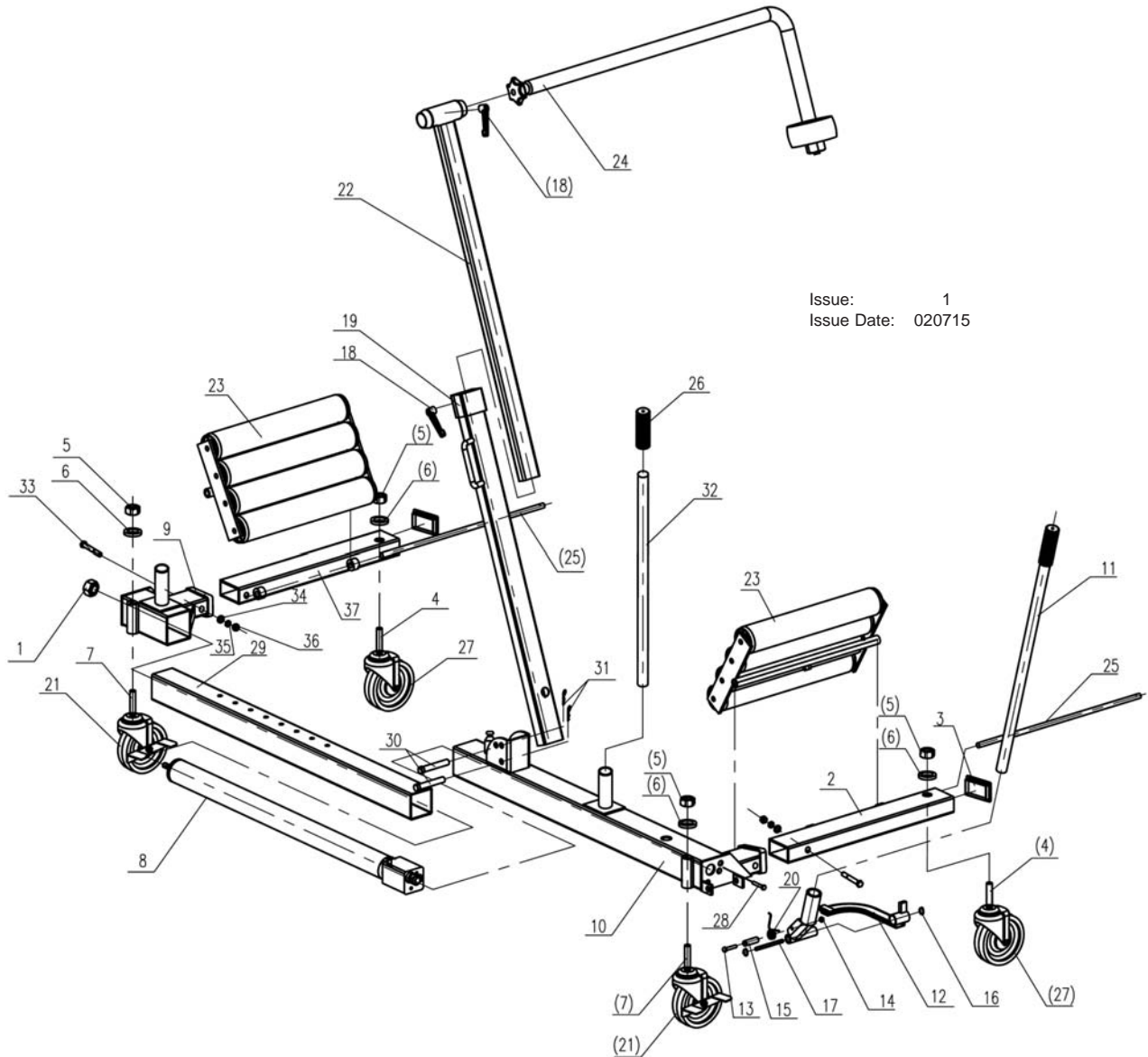




PARTS FOR:
WHEEL REMOVAL TROLLEY 1200kg CAPACITY
MODEL: W1200T.V2



Issue: 1
 Issue Date: 020715

ITEM	PART NO	DESCRIPTION
1	W1200T.V2-01	NUT (M14)
2	W1200T.V2-02	SUPPORT FRAME, RIGHT
3	W1200T.V2-03	END CAP
4	W1200T.V2-04	BOLT (M16x100)
5	W1200T.V2-05	LOCK NUT M16
6	W1200T.V2-06	WASHER (M16)
7	W1200T.V2-07	BOLT (M16x130)
8	W1200T.V2-08	HYDRAULIC ASS'Y
9	W1200T.V2-09	FRAME (A)
10	W1200T.V2-10	FRAME (B)
11	W1200T.V2-11	PUMP HANDLE
12	W1200T.V2-12	FOOT PEDAL
13	W1200T.V2-13	HEX HEAD SOCKET SCREW (M8x55)
14	W1200T.V2-14	LOCK NUT (M8)
15	W1200T.V2-15	SLEEVE
16	W1200T.V2-16	RETAINING RING (M14)
17	W1200T.V2-17	PIN
18	W1200T.V2-18	HEIGHT ADJUSTMENT CLAMP
19	W1200T.V2-19	WHEEL SUPPORT, LOWER

ITEM	PART NO	DESCRIPTION
20	W1200T.V2-20	TORSION SPRING
21	W1200T.V2-21	CASTOR ASS'Y
22	W1200T.V2-22	WHEEL SUPPORT, UPPER
23	W1200T.V2-23	ROLLER TABLE
24	W1200T.V2-24	CLAMP SUPPORT ARM
25	W1200T.V2-25	SUPPORT ROD
26	W1200T.V2-26	HANDLE GRIP
27	W1200T.V2-27	CASTOR WHEEL
28	W1200T.V2-28	HEX SOCKET HEAD SCREW
29	W1200T.V2-29	FRAME SIDE
30	W1200T.V2-30	SAFETY PIN
31	W1200T.V2-31	TORSION SPRING SAFETY PIN
32	W1200T.V2-32	HANDLE
33	W1200T.V2-33	BOLT (M16x110)
34	W1200T.V2-34	WASHER (M16)
35	W1200T.V2-35	SPRING WASHER (M16)
36	W1200T.V2-36	LOCK NUT (M16)
37	W1200T.V2-37	SUPPORT FRAME, LEFT

NOTE: It is our policy to continually improve products and as such we reserve the right to alter data, specifications and component parts without prior notice.

IMPORTANT: No liability is accepted for incorrect use of product.

WARRANTY: Guarantee is 12 months from purchase date, proof of which will be required for any claim.

INFORMATION: For a copy of our latest catalogue and promotions call us on 01284 757525 and leave your full name and address, including postcode.



Sole UK Distributor,
 Sealey Group, Kempson Way,
 Suffolk Business Park,
 Bury St Edmunds, Suffolk, IP32 7AR



01284 757500



01284 703534



www.sealey.co.uk



sales@sealey.co.uk