



# DIGITAL OIL PRESSURE TEST KIT 18PC

MODEL NO: **VS217**

Thank you for purchasing a Sealey product. Manufactured to a high standard, this product will, if used according to these instructions, and properly maintained, give you years of trouble free performance.

**IMPORTANT:** PLEASE READ THESE INSTRUCTIONS CAREFULLY. NOTE THE SAFE OPERATIONAL REQUIREMENTS, WARNINGS & CAUTIONS. USE THE PRODUCT CORRECTLY AND WITH CARE FOR THE PURPOSE FOR WHICH IT IS INTENDED. FAILURE TO DO SO MAY CAUSE DAMAGE AND/OR PERSONAL INJURY AND WILL INVALIDATE THE WARRANTY. KEEP THESE INSTRUCTIONS SAFE FOR FUTURE USE.



Refer to  
instructions



Wear eye  
protection

## 1. SAFETY

- ☐ **WARNING!** Ensure Health & Safety, local authority and general workshop practice regulations are adhered to when using this equipment.
- ☒ **DO NOT** use tools if seals or threads are damaged. Any defective seal **MUST** be changed before use to avoid incorrect readings.
- ☒ Maintain tools in good and clean condition for best and safest performance.
- ☒ Ensure that a vehicle which has been jacked up is adequately supported with axle stands.
- ☒ Wear approved eye protection. A full range of personal safety equipment is available from your Sealey stockist.
- ☒ Wear suitable clothing to avoid snagging. **DO NOT** wear jewellery and tie back long hair.
- ☒ Ensure that the correct connector is used for the engine being tested.
- ☐ **WARNING!** Always release the pressure from the gauge before disconnecting the coupling.
- ☒ Account for all tools, and parts being used and **DO NOT** leave them in or near the engine.
- IMPORTANT:** Always refer to the vehicle manufacturer's service instructions, or a proprietary manual, to establish the current procedure and data.
- ☐ **WARNING!** The warnings, cautions and instructions discussed in this instruction manual cannot cover all possible conditions and situations that may occur. It must be understood that common sense and caution are factors which cannot be built into this product, but must be applied by the operator.

## 2. INTRODUCTION

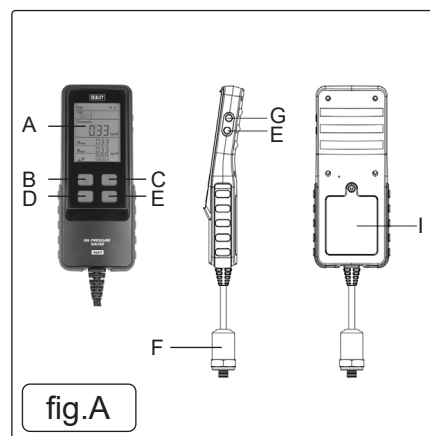
Real-time oil pressure readings. Easy-to-read digital display. 2.8-inch Backlit display. Pressure units – psi, bar, kg/cm<sup>2</sup>. Auto-power-off. The set includes 16 adaptors, a 90° quick-release connector, oil-resistant hose with a quick-release connector. Suitable for passenger vehicles, light commercial and motorcycles. Supplied in storage case.

## 3. SPECIFICATION

Model No:	VS217	Battery:	AAA x4 (not supplied)
Nett Weight:	1.5kg	Overload Pressure:	580psi (40bar)
Operating Temperature:	-10 to 60°C	Hose Length:	2600mm
Operating Voltage:	6V	Contents:	M10x1.0, M10x1.25, M12x1.25, M12x1.5, M12x1.75, M14x1.25, M14x1.5, M16x1.25, M16x1.5, M18x1.5, 3/8-24UNF, 1/2-20UNF, NPT-1/4-18, NPT-1/8-27, NPT-3/8-18, ZG1/8-28, 90° Quick-release connector, Oil-resistant hose with a quick-release connector.
Pressure units:	PSI, bar, kg/cm <sup>2</sup>	Refer to attached parts list.	
Accuracy:	0.5% FS		
Range:	0 to 435psi (0 to 30 bar)		
Resolution:	0.01bar, 0.01kg/cm <sup>2</sup> , 0.01psi.		

## 4. FEATURES

A	Display
B	[  ] press to lock/unlock the interface
C	[  ] Pressure units convert
D	[  ] Press to reset testing time; Long press to zero pressure
E	[  ] Press to switch between Chinese/English mode; Long press to turn the device On/Off
F	Measuring Probe
G	[  ] Press to turn On/Off the key tone
H	[  ] Press to turn On/Off the backlight
I	Battery Cover



#### 4.1. INTERFACE DISPLAY

Pressure	Current pressure
P max	Current maximum pressure
P min	Current minimum pressure
ΔP	Differential
TIME	Current measurement time
Bar, Kg/cm <sup>2</sup> , Ps	Pressure units

### 5. OPERATION

#### 5.1. BATTERY INSTALLATION (FIG.D)

- 5.1.1. Remove rear battery cover by unscrewing screw.
- 5.1.2. Insert the batteries (4x1.5V AAA batteries), paying attention to the correct polarity.
- 5.1.3. Close the battery cover securely and replace screw.

#### 5.2. OPERATIONS

- 5.2.1. Press the (E) button for more than 2 seconds to start the instrument. See fig.A.
- 5.2.2. Press the (D) button for pressure zero setting (real-time pressure display as "0"). See fig.A.
- 5.2.3. Select the connector suitable for the vehicle model and connect it with the hardware cable. See fig.C.
- 5.2.4. Connect to the engine.
- 5.2.5. Press the (D) button to clear the data and timing. See fig.A.
- 5.2.6. Press the (C) button to select pressure units. See fig.A.

#### 5.3. START MEASURING

- 5.3.1. The required pressure readings will be displayed on the oil pressure gauge.
- 5.3.2. Detailed instructions are as follows if you need to lock and clear data on the interface:

#### 5.4. DATA LOCK AND INTERFACE LOCK

- 5.4.1. Press the button (B), it will display data, interface, sound, backlight, and lock at the same time, and the interface will appear "lock" icon. See fig.A.

#### 5.5. UNLOCK

- 5.5.1. Based on the last step, press the (B) button again, the device will display data, interface, sound and backlight and it is unlocked. See fig.A.

#### 5.6. CLEAR THE DATA

- 5.6.1. Click press (D), the data will be clear completely. See fig.A.
- 5.6.2. After the measurement is completed, long press (E) for 2 seconds to shut down (it is required to be conducted under atmospheric pressure). See fig.A.
- 5.6.3. The device will automatically power off after 5 minutes of inactivity and no pressure being applied.

### 6. MAINTENANCE

#### 6.1. GENERAL

To maintain the performance and appearance of the product, it is recommended that the following product care guidelines be read carefully:

- 6.1.1. Regularly check the product parts that need to be tightened and connected.  
If found loose, tighten to ensure the safe operation of the equipment.
- 6.1.2. The external and internal parts of the equipment in contact with various chemicals should be frequently treated with anti-corrosion treatment such as rust removal.
- 6.1.3. Comply with the safe operating procedures and **DO NOT** overload the equipment.

#### 6.2. STORAGE

- 6.2.1. When not in use, please store the product in a dry childproof place. **DO NOT** store the product in hot, humid, or non-ventilated places.

### 7. END OF LIFE

- 7.1. Through years of normal wear, the oil pressure gauge kit will eventually become unserviceable. When this happens ensure that it is disposed of in accordance with local authority regulations.
- 7.2. **BATTERY DISPOSAL**
- 7.3. Exposure to high temperatures can cause the batteries to explode; **DO NOT** dispose of in a fire. Some countries have regulations concerning battery disposal. Follow all applicable regulations. Return used batteries to a collection location for recycling.

fig.B

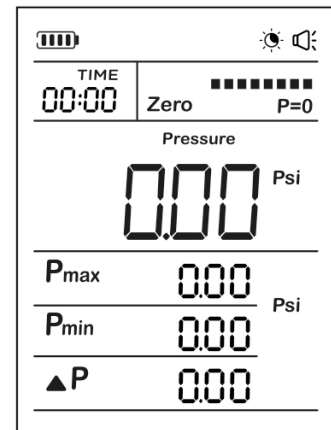


fig.C



fig.D



#### ENVIRONMENT PROTECTION

Recycle unwanted materials instead of disposing of them as waste. All tools, accessories and packaging should be sorted, taken to a recycling centre and disposed of in a manner which is compatible with the environment. When the product becomes completely unserviceable and requires disposal, drain any fluids (if applicable) into approved containers and dispose of the product and fluids according to local regulations.



REGISTER YOUR  
PURCHASE HERE



#### BATTERY REMOVAL

Under the Waste Batteries and Accumulators Regulations 2009, Jack Sealey Ltd are required to inform potential purchasers of products containing batteries (as defined within these regulations), that they are registered with Valpak's registered compliance scheme. Jack Sealey Ltd's Batteries Producer Registration Number (BPRN) is BPRN00705.



#### WEEE REGULATIONS

Dispose of this product at the end of its working life in compliance with the EU Directive on Waste Electrical and Electronic Equipment (WEEE). When the product is no longer required, it must be disposed of in an environmentally protective way. Contact your local solid waste authority for recycling information.

**Note:** It is our policy to continually improve products and as such we reserve the right to alter data, specifications and component parts without prior notice. Please note that other versions of this product are available. If you require documentation for alternative versions, please email **or call our technical team on [technical@sealey.co.uk](mailto:technical@sealey.co.uk) or 01284 757505.**

**Important:** No Liability is accepted for incorrect use of this product.

**Warranty:** Guarantee is 12 months from purchase date, proof of which is required for any claim.

**Sealey Group, Kempson Way, Suffolk Business Park, Bury St Edmunds, Suffolk. IP32 7AR**



**01284 757500**



**[sales@sealey.co.uk](mailto:sales@sealey.co.uk)**



**[www.sealey.co.uk](http://www.sealey.co.uk)**