

Item	Part No.	Description
100	PT1150SC.V3-100	Rocker Arm
101	PT1150SC.V3-101	Cam
102	PT1150SC.V3-102	Push Rod
103	PT1150SC.V3-103	Push Rod Pin
104	PT1150SC.V3-104	Frame
105	PT1150SC.V3-105	Split Pin
106	PT1150SC.V3-106	Rocker Arm Axle
107	PT1150SC.V3-107	Display Unit
111	PT1150SC.V3-111	Plate (Upper)
112	PT1150SC.V3-112	Sensor
113	PT1150SC.V3-113	Plate (Lower)
114	PT1150SC.V3-114	Frame
115	PT1150SC.V3-115	Elastic Pin
119	PT1150SC.V3-119	Frame for Roller
120	PT2200.112	Connection pin

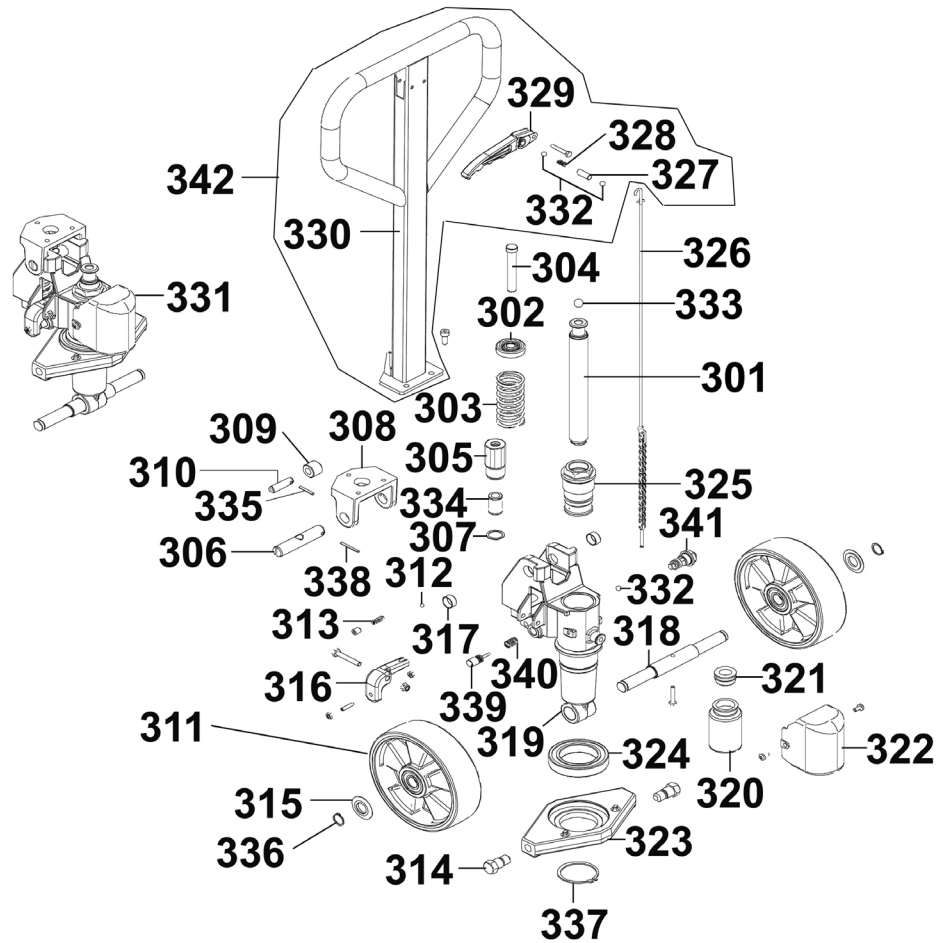
Item	Part No.	Description
121	PT1150SC.V3-121	Elastic Pin
122	PT1150SC.V3-122	Link Plate
123	PT1150SC.V3-123	Polyurethane Roller 82x60
124	PT1150SC.V3-124	Roller Spacer
125	PT1150SC.V3-125	Roller Tandem Complete
301	PT1150SC.V3-301	Piston
302	PT1150SC.V3-302	Spring Guide
303	PT1150SC.V3-303	Spring
304	PT1150SC.V3-304	Pump Plunger
305	PT1150SC.V3-305	Cylinder
306	PT1150SC.V3-306	Bracket Pin
307	PT1150SC.V3-307	Washer
308	PT1150SC.V3-308	Bracket
309	PT1150SC.V3-309	Roller

NOTE: It is our policy to continually improve products and as such we reserve the right to alter data, specifications and component parts without prior notice. There may be alternative versions of this product, please contact us should you require this information.

IMPORTANT: No liability is accepted for incorrect use of product. Spare parts must be fitted by a competent person

WARRANTY: Guarantee is 12 months from purchase date, proof of which will be required for any claim.

Parts Information:
Pallet Truck 2500kg 1185 x 555mm with Scales
Model No: PT1150SC.V3



Item	Part No.	Description
310	PT1150SC.V3-310	Roller Pin
311	PT1150SC.V3-311	Polyurethane Wheel D200x50
312	PT1150SC.V3-312	Ball
313	PT1150SC.V3-313	Spring
314	PT1150SC.V3-314	Screw
315	PT1150SC.V3-315	Wheel Dust Guard
316	PT1150SC.V3-316	Pedal
317	PT1150SC.V3-317	Brass Bushing
318	PT1150SC.V3-318	Wheel Axle
319	PT1150SC.V3-319	Pump Casing
320	PT1150SC.V3-320	Oil Tank
321	PT1150SC.V3-321	Oil Tank Cap
322	PT1150SC.V3-322	Tank Guard
323	PT1150SC.V3-323	Cross Plate
324	PT1150SC.V3-324	Bearing 6012-2RS
325	PT1150SC.V3-325	Bushing
326	PT1150SC.V3-326	Tie Rod

Item	Part No.	Description
327	PT1150SC.V3-327	Lower Lever Spacer
328	PT1150SC.V3-328	Lower Lever Spring
329	PT1150SC.V3-329	Control Lever
330	PT1150SC.V3-330	Main Handle
331	PT1150SC.V3-331	Complete Hydraulic Assembly
332	PT1150SC.V3-332	Ball
333	PT1150SC.V3-333	Ball
334	PT1150SC.V3-334	Lock Guide
335	PT1150SC.V3-335	Elastic Pin
336	PT1150SC.V3-336	Lock Ring
337	PT1150SC.V3-337	Lock Ring
338	PT1150SC.V3-338	Elastic Pin
339	PT1150SC.V3-339	Spindle
340	PT1150SC.V3-340	Spring
341	PT1150SC.V3-341	Complete Valve
342	PT1150SC.V3-342	Complete Handle

NOTE: It is our policy to continually improve products and as such we reserve the right to alter data, specifications and component parts without prior notice. There may be alternative versions of this product, please contact us should you require this information.

IMPORTANT: No liability is accepted for incorrect use of product. Spare parts must be fitted by a competent person

WARRANTY: Guarantee is 12 months from purchase date, proof of which will be required for any claim.