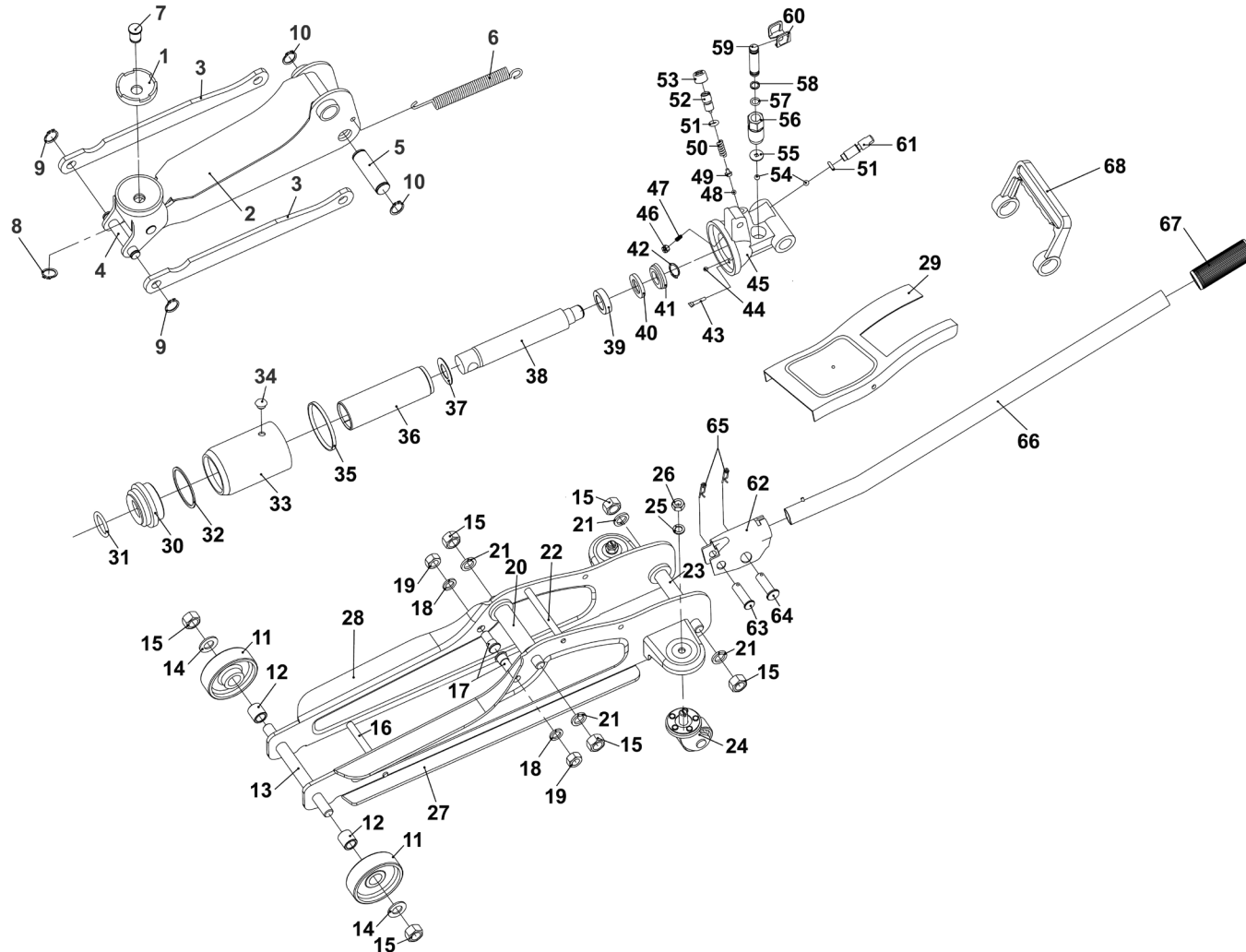




Parts Information:
Trolley Jack 2tonne Low Entry Short Chassis
Model No: 1020LE.V3 SERIES



NOTE: It is our policy to continually improve products and as such we reserve the right to alter data, specifications and component parts without prior notice.

There may be alternative versions of this product, please contact us should you require this information.

IMPORTANT: No liability is accepted for incorrect use of product. Spare parts must be fitted by a competent person

WARRANTY: Guarantee is 12 months from purchase date, proof of which will be required for any claim.

Sealey Group, Kempson Way, Suffolk Business Park, Bury St Edmunds, Suffolk. IP32 7AR



01284 757500



01284 703534



sales@sealey.co.uk



www.sealey.co.uk



Parts Information:
Trolley Jack 2tonne Low Entry Short Chassis
Model No: 1020LE.V3 SERIES

Item	Part No.	Description
1	1020LE.V3-01	Saddle
2	1020LE.V3-02	Lift Arm Assembly
3	1020LE.V3-03	Radius Link
4	1020LE.V3-04	Radius Link Axle
5	1020LE.V3-05	Ram Plunger Axle
6	1020LE.V3-06	Return Spring
7	1020LE.V3-07	Saddle Pin
8	1020LE.V3-08	Ext Circlip 13mm
9	1020LE.V3-09	Ext Circlip 12mm
10	1020LE.V3-10	Ext Circlip 17mm
11	1020LE.V3-11	Front Wheel
12	1020LE.V3-12	Front Wheel Bush
13	1020LE.V3-13	Front Axle
14	FWM12.S	Flat Washer M12 Zinc
15	SN12.S	Steel Nut M12 Zinc
16	1020LE.V3-16	Frame Tie Rod
17	1020LE.V3-17	Radius Link Stud
18	SWM10.S	Spring Washer M10 Zinc
19	NLN10.S	Nyloc Nut M10 Zinc
20	1020LE.V3-20	Fixed Shaft (Centre)
21	SWM12.S	Spring Washer M12 Zinc
22	1020LE.V3-22	Frame Tie Rod
23	1020LE.V3-23	Fixed Shaft
24	1020LE.V3-24	Rear Castor Assembly
25	SWM8.S	Spring Washer M8 Zinc
26	NLN8.S	Nyloc Nut M8 Zinc
27	1020LE.V3-27	Frame, Left Side (Red)
27	1020LEB.27	Frame, Left Side (Blue)
27	1020LEHV.27	Frame, Left Side (Hi-Vis)
27	1020LEO.27	Frame, Left Side (Orange)
28	1020LE.V3-28	Frame, Right Side (Red)
28	1020LEB.28	Frame, Right Side (Blue)
28	1020LEHV.28	Frame, Right Side (Hi-Vis)
28	1020LEO.28	Frame, Right Side (Orange)
29	1020LE.V3-29	Cover Plate
30	1020LE.V3-30	Top Nut
31	1020LE.V3-31	O-Ring (25 x 3.55)

Item	Part No.	Description
32	1020LE.V3-32	Seal Ring
33	1020LE.V3-33	Reservoir
34	1020LE.V3-34	Oil Seal
35	1020LE.V3-35	Wedge Ring
36	1020LE.V3-36	Cylinder
37	1020LE.V3-37	Flat Washer (34 x 23 x 0.8)
38	1020LE.V3-38	Ram Plunger
39	1020LE.V3-39	Bushing Cover
40	1020LE.V3-40	Back-up Washer
41	1020LE.V3-41	U-Cup Seal
42	1020LE.V3-42	Ext Circlip 16mm
43	1020LE.V3-43	Filter
44	SB-5.0	Steel Ball 5.0mm
45	1020LE.V3-45	Base
46	1020LE.V3-46	Throttle Valve
47	1020LE.V3-47	Spring
48	SB-4.0	Steel ball 4.0mm
49	1020LE.V3-49	Steel Ball Base
50	1020LE.V3-50	Safety Valve Spring
51	1020LE.V3-51	O-Ring (6 x 3)
52	1020LE.V3-52	Safety Valve Screw
53	1020LE.V3-53	Protection Cap
54	SB-6.0	Steel Ball 6.0mm
55	1020LE.V3-55	Flat Washer (16 x 4 x 4 x 1)
56	1020LE.V3-56	Pump
57	1020LE.V3-57	O-Ring (7.7 x 1.9)
58	1020LE.V3-58	Back-up Washer
59	1020LE.V3-59	Pump Piston
60	1020LE.V3-60	Connection Sleeve
61	1020LE.V3-61	Release Valve Rod
62	1020LE.V3-62	Handle Socket
63	1020LE.V3-63	Handle Socket Pin (Upper)
64	1020LE.V3-64	Handle Socket Pin (Lower)
65	1020LE.V3-65	Retaining Pin
66	1020LE.V3-66	Handle
67	1020LE.V3-67	Handle Grip
68	1020LE.V3-68	Carry Handle

NOTE: It is our policy to continually improve products and as such we reserve the right to alter data, specifications and component parts without prior notice. There may be alternative versions of this product, please contact us should you require this information.

IMPORTANT: No liability is accepted for incorrect use of product. Spare parts must be fitted by a competent person

WARRANTY: Guarantee is 12 months from purchase date, proof of which will be required for any claim.

Sealey Group, Kempson Way, Suffolk Business Park, Bury St Edmunds, Suffolk. IP32 7AR



01284 757500



01284 703534



sales@sealey.co.uk



www.sealey.co.uk