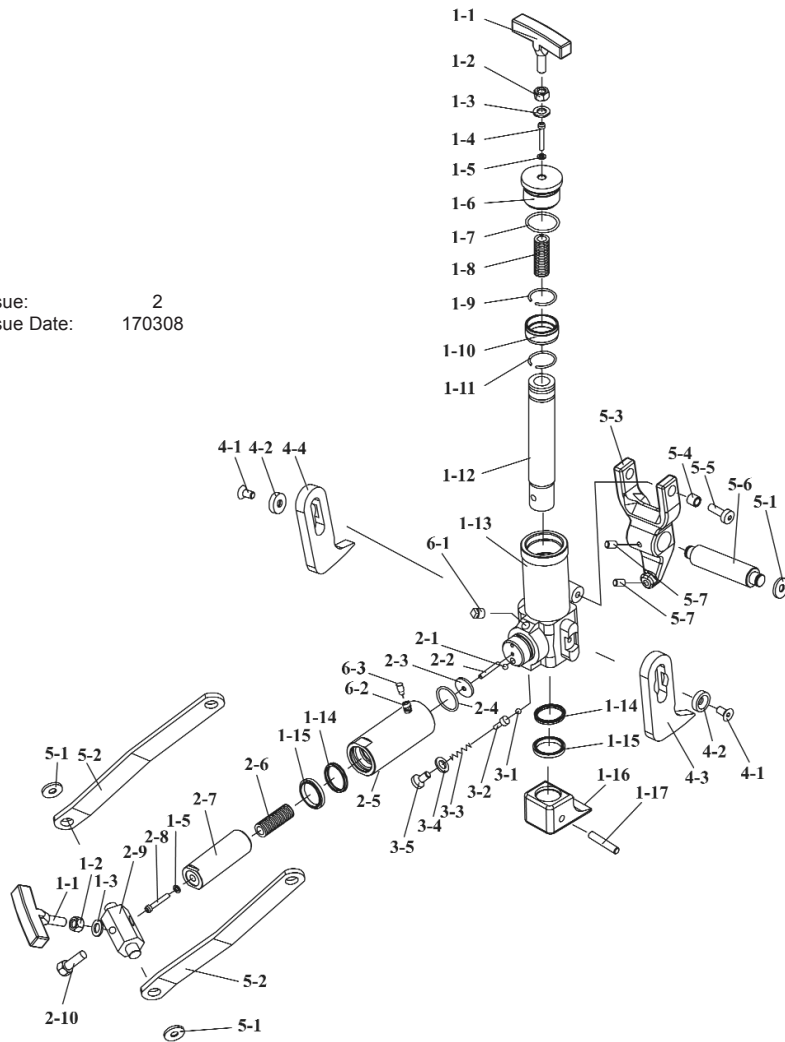


PARTS FOR:
HYDRAULIC BEAD BREAKER
MODEL: **TC966**

Issue: 2
Issue Date: 170308



ITEM	PART NO	DESCRIPTION	ITEM	PART NO	DESCRIPTION
1-1	TC966.01-1	HANDLE	2-7	TC966.02-7	PISTON ROD
1-2	TC966.01-2	NUT (M12)	2-8	TC966.02-8	SCREW (M5x70)
1-3	TC966.01-3	WASHER (M12)	2-9	TC966.02-9	JOINT BLOCK
1-4	TC966.01-4	SCREW (M5x50)	2-10	TC966.02-10	BOLT (M12x45)
1-5	TC966.01-5	COPPER WASHER (M5)	3-1	TC966.03-1	STEEL BALL (8mm)
1-6	TC966.01-6	CYLINDER CAP	3-2	TC966.03-2	BALL SEAT
1-7	TC966.01-7	O-RING	3-3	TC966.03-3	SPRING
1-8	TC966.01-8	SPRING	3-4	TC966.03-4	COPPER WASHER (12mm)
1-9	TC966.01-9	SNAP RING	3-5	TC966.03-5	SCREW (M12x20)
1-10	TC966.01-10	BUSHING	4-1	TC966.04-1	SCREW (M10x15)
1-11	TC966.01-11	SNAP RING	4-2	TC966.04-2	BUSHING
1-12	TC966.01-12	PISTON ROD	4-3	TC966.04-3	LEFT FOOT
1-13	TC966.01-13	CYLINDER BODY	4-4	TC966.04-4	RIGHT FOOT
1-14	TC966.01-14	Y-SEAL	5-1	TC966.05-1	SNAP RING
1-15	TC966.01-15	BUSHING	5-2	TC966.05-2	CONNECTION ROD
1-16	TC966.01-16	LEG	5-3	TC966.05-3	CLAW
1-17	TC966.01-17	PIN	5-4	TC966.05-4	BUSHING
2-1	TC966.02-1	STEEL BALL (6mm)	5-5	TC966.05-5	SCREW (M10x25)
2-2	TC966.02-2	SCREW (M6x30)	5-6	TC966.05-6	SHAFT
2-3	TC966.02-3	WASHER	5-7	TC966.05-7	SCREW
2-4	TC966.02-4	O-RING	6-1	TC966.06-1	PLUG
2-5	TC966.02-5	CYLINDER	6-2	610/SJ10	COUPLING RING
2-6	TC966.02-6	SPRING	6-3	610/SJ15	COUPLING BOLT

NOTE: It is our policy to continually improve products and as such we reserve the right to alter data, specifications and component parts without prior notice.

IMPORTANT: No liability is accepted for incorrect use of product.

WARRANTY: Guarantee is 12 months from purchase date, proof of which will be required for any claim.

INFORMATION: For a copy of our latest catalogue and promotions call us on 01284 757525 and leave your full name and address, including postcode.