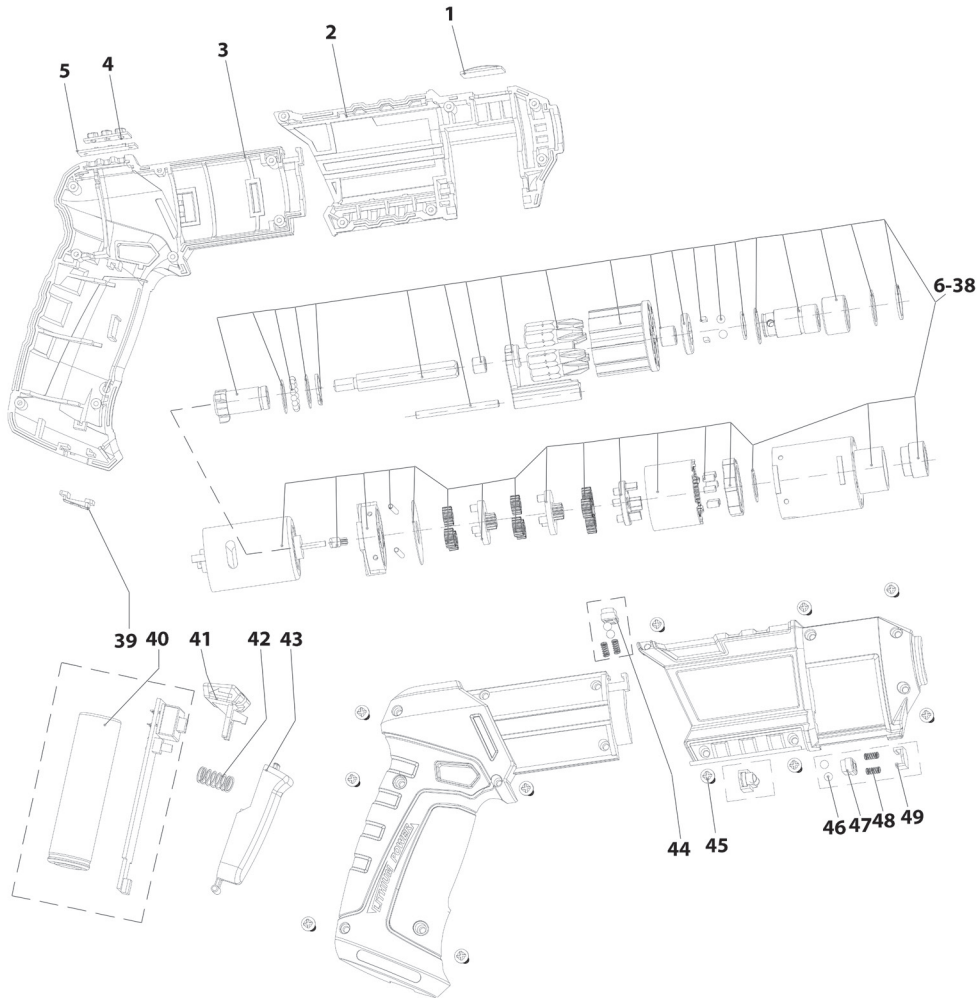




Parts Information:
Cordless Screwdriver Quick Select 14pc
3.7V Lithium-ion USB
Model No: CP36MS



Item	Part No.	Description
1	CP36MS.01	TRANSPARENT SCREEN
2	CP36MS.02	HOUSING
3	CP36MS.03	HOUSING (HANDLE)
4	CP36MS.04	FUNCTION BUTTON
5	CP36MS.05	FUNCTION PCB
6-38	CP36MS.06-38	GEARBOX & MOTOR ASS'Y
39	CP36MS.39	CHARGING CONNECTOR
40	CP36MS.40	LITHIUM-ION BATTERY 3.7V
41	CP36MS.41	FORWARD/REVERSE LEVER

Item	Part No.	Description
42	CP36MS.42	SWITCH TRIGGER SPRING
43	CP36MS.43	SWITCH TRIGGER
4	CP36MS.44	STEEL BALL BRACKET (A)
45	CP36MS.45	SELF TAPPING SCREW (ST2.5x12)
46	SB-3.5	STEEL BALL 3.5mm
47	CP36MS.47	STEEL BALL BRACKET (B)
48	CP36MS.48	STEEL BALL SPRING
49	CP36MS.49	STEEL BALL BRACKET SEAT
--	CP36MS.50	USB CHARGING CABLE (not shown)

NOTE: It is our policy to continually improve products and as such we reserve the right to alter data, specifications and component parts without prior notice.

IMPORTANT: No liability is accepted for incorrect use of product.

WARRANTY: Guarantee is 12 months from purchase date, proof of which will be required for any claim.

Sealey Group, Kempson Way, Suffolk Business Park, Bury St Edmunds, Suffolk. IP32 7AR



01284 757500



01284 703534



sales@sealey.co.uk



www.sealey.co.uk