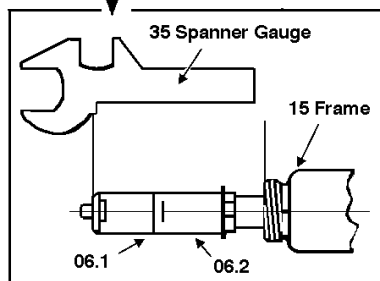
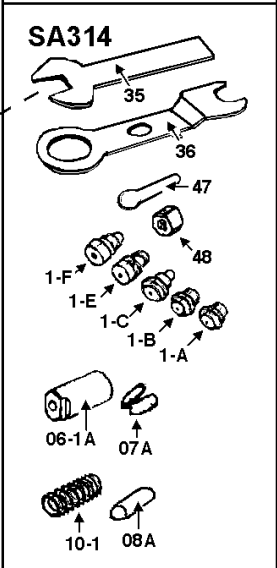
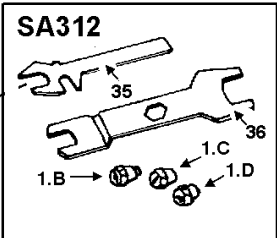
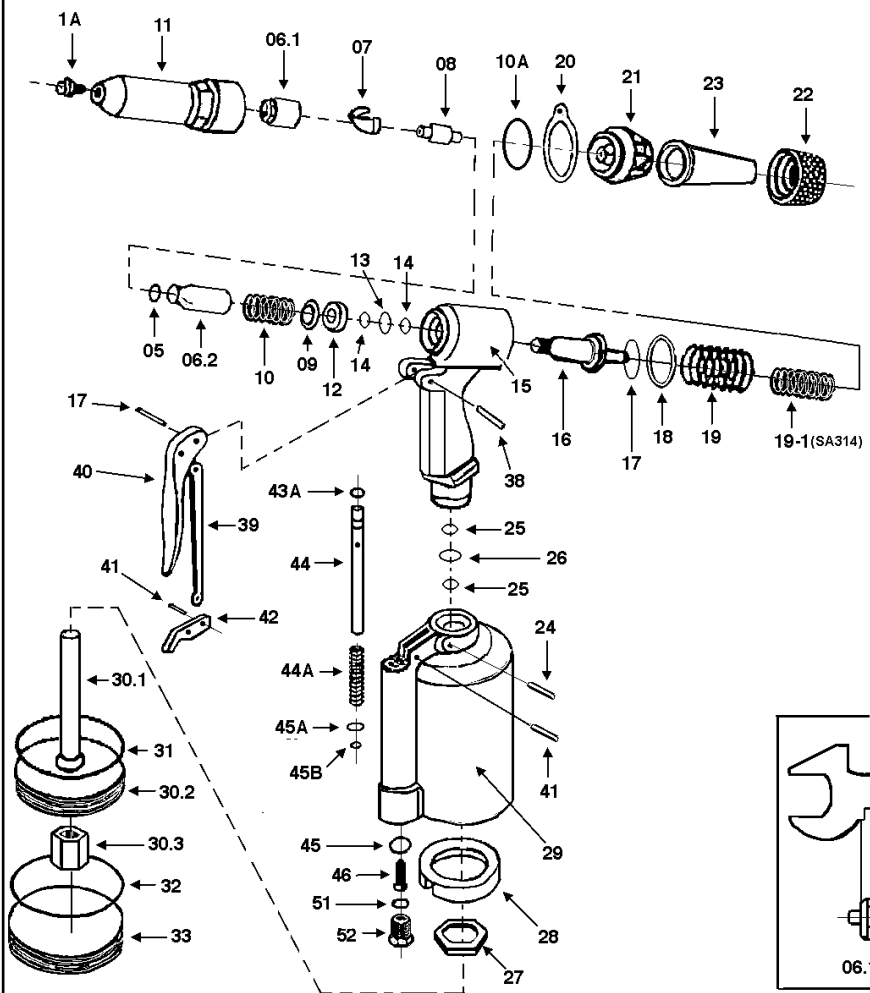


Original Date:- 120597
 Issue Date:- 120597
 Version No:- 1
 Date Modified:- 010999



Parts List for: AIR RIVETER Models: SA312 & SA314

SA312

Item	Part No	Description	
1A	SA312-01A	Nosepiece	3-16"
1B	SA312-01B	Nosepiece	5-32"
1C	SA312-01C	Nosepiece	1-8"
1D	SA312-01D	Nosepiece	3-32"
05	SA312-05	O-Ring	
06-1	SA312-06-01	Jaw Case Front Part, 3-32,1-8,5-32"	
06-2	SA312-06-02	Jaw Case End Part	
07	SA312-07	Jaw	
08	SA312-08	Jaw Pusher	
09	SA312-09	Case Washer Ring	
10	SA312-10	Jaw Pusher Spring	
10A	SA312-10A	Frame Cap O-Ring 27 x 2	
11	SA312-11	Frame Head	
12	SA312-12	Case Lock Nut	
13	SA312-13	Back Up Ring	
14	SA312-14	Back Up O-Ring P12	
15	SA312-15	Frame	
16	SA312-16	Oil Piston	
17	SA312-17	Oil Piston O-Ring P22A	
18	SA312-18	Back Up Room	
19	SA312-19	Return Spring	
20	SA312-20	Hanging Clip	
21	SA312-21	Frame Cap	
22	SA312-22	Frame Cap Nut	
23	SA312-23	Safety Cap	
24	SA312-24	Setting Screw Pin	
25	SA312-25	Back Up O-Ring 12	
26	SA312-26	Back Up Ring	
27	SA312-27	Frame Lock Nut	
28	SA312-28	Rubber Cushion	
29	SA312-29	Air Cylinder	
30.1	SA312-30-01	Air Piston Stem	
30.2	SA312-30-02	Air Piston	
30.3	SA312-30-03	Air Piston Lock Nut	
31	SA312-31	Air Piston O-Ring	
32	SA312-32	Cylinder O-Ring	
33	SA312-33	Cylinder Cap	
35	SA312-35	Spanner Gauge	
36	SA312-36	Spanner	
37	SA312-37	Trigger Pin	
38	SA312-38	Connector	
39	SA312-39	Trigger Rod	
40	SA312-40	Trigger	
41	SA312-41	Connector	
42	SA312-42	Trigger Lever	
43	SA312-43	Lever Pin	
43A	SA312-43A	Valve Pusher O-Ring P7	
44	SA312-44	Valve Pusher	
44A	SA312-44A	Valve Spring	
45	SA312-45	Valve	
45A	SA312-45A	Valve Collar	
45B	SA312-45B	Collar O-Ring P5	
46	SA312-46	Valve Spring	
51	SA312-51	Valve Cap O-Ring P11	
52	SA312-52	Valve Cap	

SA314

Item	Part No	Description
1A	SA314-01A	Nosepiece 3-16"
1B	SA314-01B	Nosepiece 5-32"
1C	SA314-01C	Nosepiece 1-8"
1D	SA314-01D	Nosepiece 3-32"
1E	SA314-01E	Nosepiece 1-4"
1F	SA314-01F	Nosepiece 7-32"
05	SA314-05	O-Ring, jaw case end
06-1	SA314-06-01	Case Front Jaw 1-4" 7-32" 3-16"
06-1A	SA314-06-01A	Case Front Jaw 3-32" 1-8" 5-32"
06-2	SA314-06-02	Case, jaw end
07	SA314-07	Jaw
07A	SA314-07A	Jaw (Small)
08	SA314-08	Jaw Pusher 1-4", 7-32", 3-16"
08A	SA314-08A	Jaw Pusher 3-32", 1-8", 5-32"
09	SA314-09	Case Washer Ring
10	SA314-10	Jaw Pusher Spring 1-4"
10-1	SA314-10-01	Jaw Pusher Spring 5-32"
10A	SA314-10A	Frame Cap O-Ring
11	SA314-11	Frame Head
12	SA314-12	Case Lock Nut
13	SA314-13	Back Up Ring
14	SA314-14	Back Up O-Ring
15	SA314-15	Frame
16	SA314-16	Oil Piston
17	SA314-17	Oil Piston O-Ring
18	SA314-18	Back Up Room
19	SA314-19	Return Spring (Old)
19-1	SA314-19-01	Return Spring (Small)
20	SA314-20	Hanging Clip
21	SA314-21	Frame Cap
22	SA314-22	Frame Cap Nut
23	SA314-23	Safety Cap
24	SA314-24	Setting Screw Pin
25	SA314-25	Back Up O-Ring
26	SA314-26	Back Up Ring
27	SA314-27	Frame Lock Nut
28	SA314-28	Rubber Cushion
29	SA314-29	Air Cylinder
30.1	SA314-30-01	Air Piston Stem
30.2	SA314-30-02	Air Piston
30.3	SA314-30-03	Air Piston Lock Nut
31	SA314-31	Air Piston O-Ring
32	SA314-32	Cylinder O-Ring
33	SA314-33	Cylinder Cap
35	SA314-35	Spanner Gauge
36	SA314-36	Spanner
37	SA314-37	Trigger Pin
38	SA314-38	Connector
39	SA314-39	Trigger Rod
40	SA314-40	Trigger
41	SA314-41	Connector
42	SA314-42	Trigger Lever
43	SA314-43	Lever Pin
43A	SA314-43A	Valve Pusher O-Ring
44	SA314-44	Valve Pusher
44A	SA314-44A	Valve Spring
45	SA314-45	Valve
45A	SA314-45A	Valve Collar
45B	SA314-45B	Collar O-Ring
46	SA314-46	Valve Spring (Bottom)
47	SA314-47	Inlet Bushing
48	SA314-48	Inlet Bushing Nut
51	SA314-51	Valve Cap O-Ring
52	SA314-52	Valve Cap