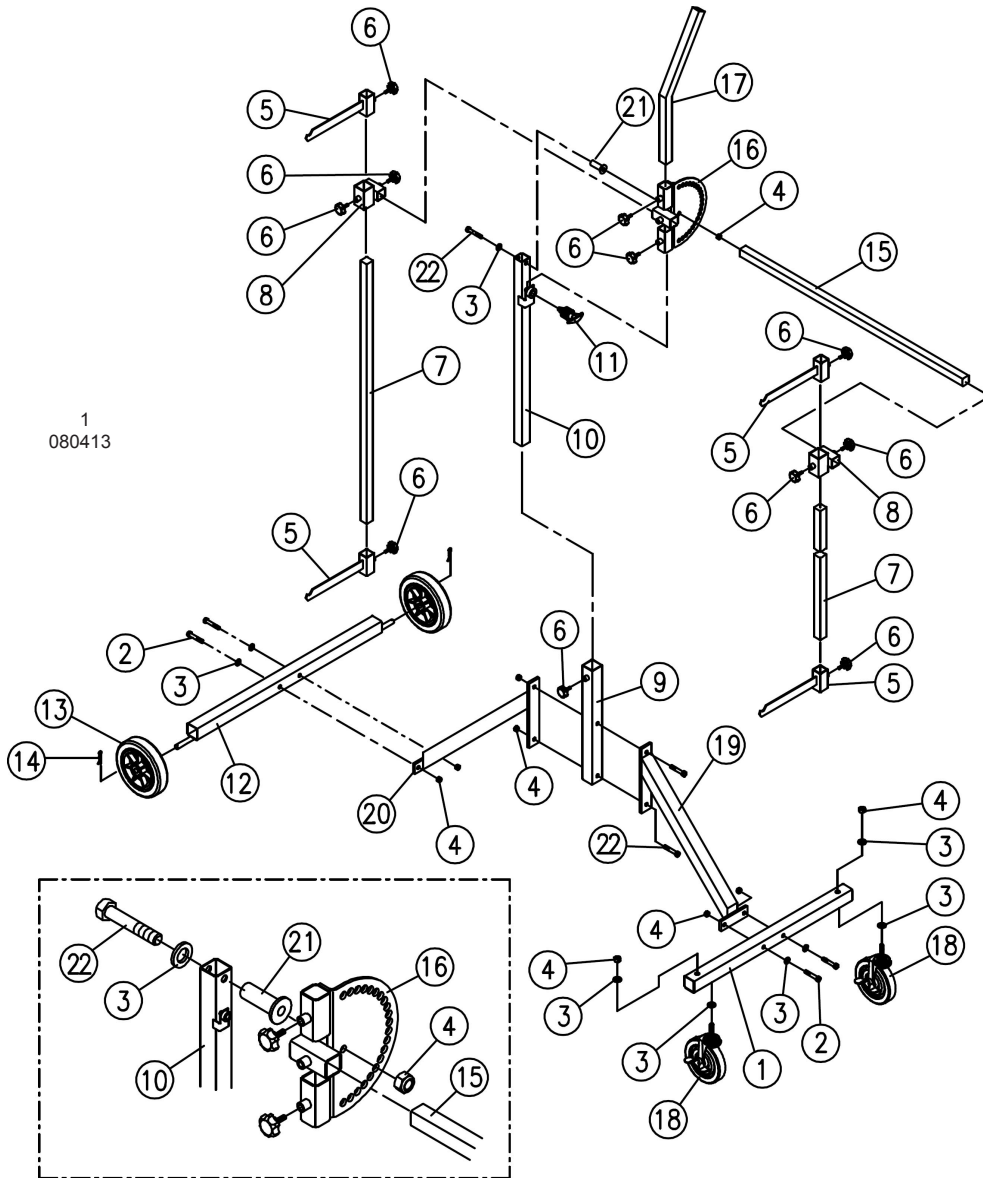


Issue: 1
 Issue Date: 080413



ITEM	PART NO	DESCRIPTION	ITEM	PART NO	DESCRIPTION
1	MK51.V2-01	SIDE LEG (BASE TUBE)	13	MK51.V2-13	WHEEL 175X37X13
2	MK51.V2-02	SCREW	14	MK51.V2-14	SNAP RING
3	MK51.V2-03	WASHER	15	MK51.V2-15	EXTENSION FRAME (CROSS TUBE)
4	MK51.V2-04	LOCK NUT	16	MK51.V2-16	ADJUSTABLE ANGLE BRACKET (ANGULAR DISC)
5	MK51.V2-05	SUPPORT FOR UPRIGHT (SET TUBE)	17	MK51.V2-17	EXTENSION FRAME
6	MK51.V2-06	KNOB	18	MK51.V2-18	WHEEL WITH BRAKE 122X25X11
7	MK51.V2-07	UPRIGHT FRAME,SIDE (ERECT TUBE)	19	MK51.V2-19	BASE SUPPORT (OBLIGUE TUBE)
8	MK51.V2-08	SUPPORT FOR UPRIGHT (SET TUBE)	20	MK51.V2-20	BASE SUPPORT (OBLIGUE TUBE)
9	MK51.V2-09	UPRIGHT FRAME SUPPORT (BOTTOM ERECT TUBE)	21	MK51.V2-21	BUSHING
10	MK51.V2-10	UPRIGHT FRAME (TOP ERECT TUBE)	22	MK51.V2-22	SCREW (3/8x2-1/2")
11	MK51.V2-11	LOCK PIN			
12	MK51.V2-12	SIDE LEG (BASE TUBE)			

NOTE: It is our policy to continually improve products and as such we reserve the right to alter data, specifications and component parts without prior notice.

IMPORTANT: No liability is accepted for incorrect use of product.

WARRANTY: Guarantee is 12 months from purchase date, proof of which will be required for any claim.

INFORMATION: For a copy of our latest catalogue and promotions call us on 01284 757525 and leave your full name and address, including postcode.