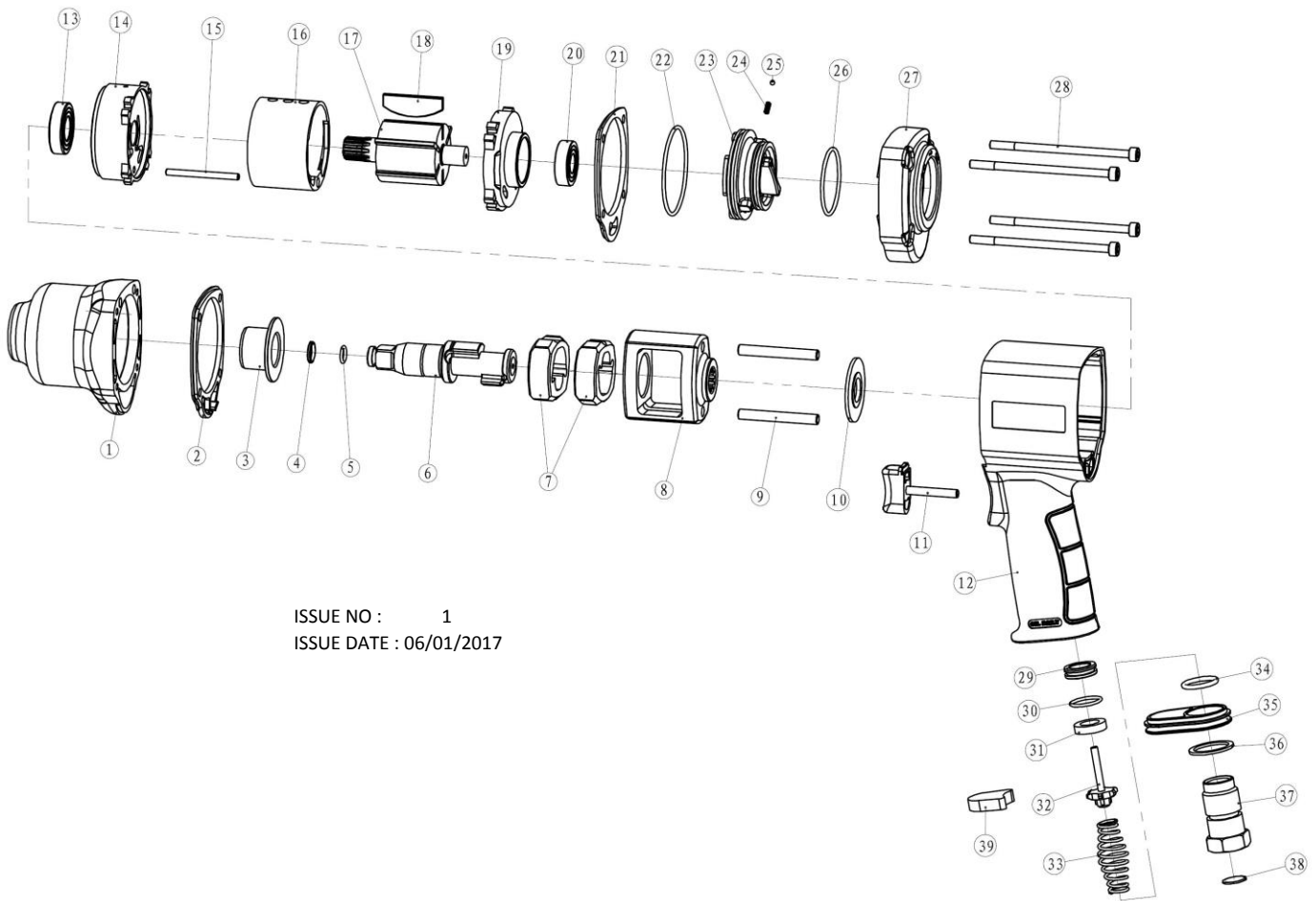


SEALEY

PARTS FOR :
COMPOSITE AIR IMPACT
WRENCH 1/2" Sq Dr TWIN HAMMER
MODELS: GSA6002.V2



ISSUE NO : 1
 ISSUE DATE : 06/01/2017

| ITEM | PART NO | DESCRIPTION | ITEM | PART NO | DESCRIPTION |
|------|---------------|-------------------------------------|------|---------------|-----------------------------------|
| 1 | GSA6002.V2-01 | HAMMER CASE & ANVIL BUSHING (inc 3) | 23 | GSA6002.V2-23 | TIMING BUTTON |
| 2 | GSA6002.V2-02 | RUBBER GASKET | 24 | GSA6002.V2-24 | SPRING |
| 4 | GSA6002.V2-04 | CIRCLIP | 25 | GSA6002.V2-25 | STEEL BALL |
| 5 | GSA6002.V2-05 | O-RING | 26 | GSA6002.V2-26 | O-RING |
| 6 | GSA6002.V2-06 | ANVIL | 27 | GSA6002.V2-27 | REAR COVER |
| 7 | GSA6002.V2-07 | HAMMER | 28 | GSA6002.V2-28 | FASTENING SCREW |
| 8 | GSA6002.V2-08 | HAMMER CAGE | 29 | GSA6002.V2-29 | INLET GASKET |
| 9 | GSA6002.V2-09 | HAMMER PIN | 30 | GSA6002.V2-30 | O-RING |
| 10 | GSA6002.V2-10 | GASKET | 31 | GSA6002.V2-31 | RUBBER SEAL |
| 11 | GSA6002.V2-11 | TRIGGER | 32 | GSA6002.V2-32 | INLET VALVE |
| 13 | GSA6002.V2-13 | BEARING | 33 | GSA6002.V2-33 | INLET SPRING |
| 14 | GSA6002.V2-14 | FRONT END PLATE | 34 | GSA6002.V2-34 | O-RING |
| 15 | GSA6002.V2-15 | PIN | 35 | GSA6002.V2-35 | PLASTIC COVER |
| 16 | GSA6002.V2-16 | CYLINDER | 36 | GSA6002.V2-36 | GASKET |
| 18 | GSA6002.V2-18 | ROTOR VANE | 37 | GSA6002.V2-37 | AIR INLET |
| 19 | GSA6002.V2-19 | REAR END PLATE | 38 | GSA6002.V2-38 | AIR INLET SCREEN |
| 20 | GSA6002.V2-20 | BEARING | 39 | GSA6002.V2-39 | MUFFLER |
| 21 | GSA6002.V2-21 | RUBBER GASKET | -- | GSA6002V2-11A | HANDLE ASS'Y (inc 11, 12, 28, 38) |
| 22 | GSA6002.V2-22 | O-RING | -- | GSA6002V2-17A | ROTOR ASS'Y (inc 17, 18, 19) |

SEALEY

Sole UK Distributor, Sealey Group.
 Kempson Way, Suffolk Business Park,
 Bury St. Edmunds, Suffolk.
 IP32 7AR

01284 757500

01284 703534

www.sealey.co.uk

sales@sealey.co.uk