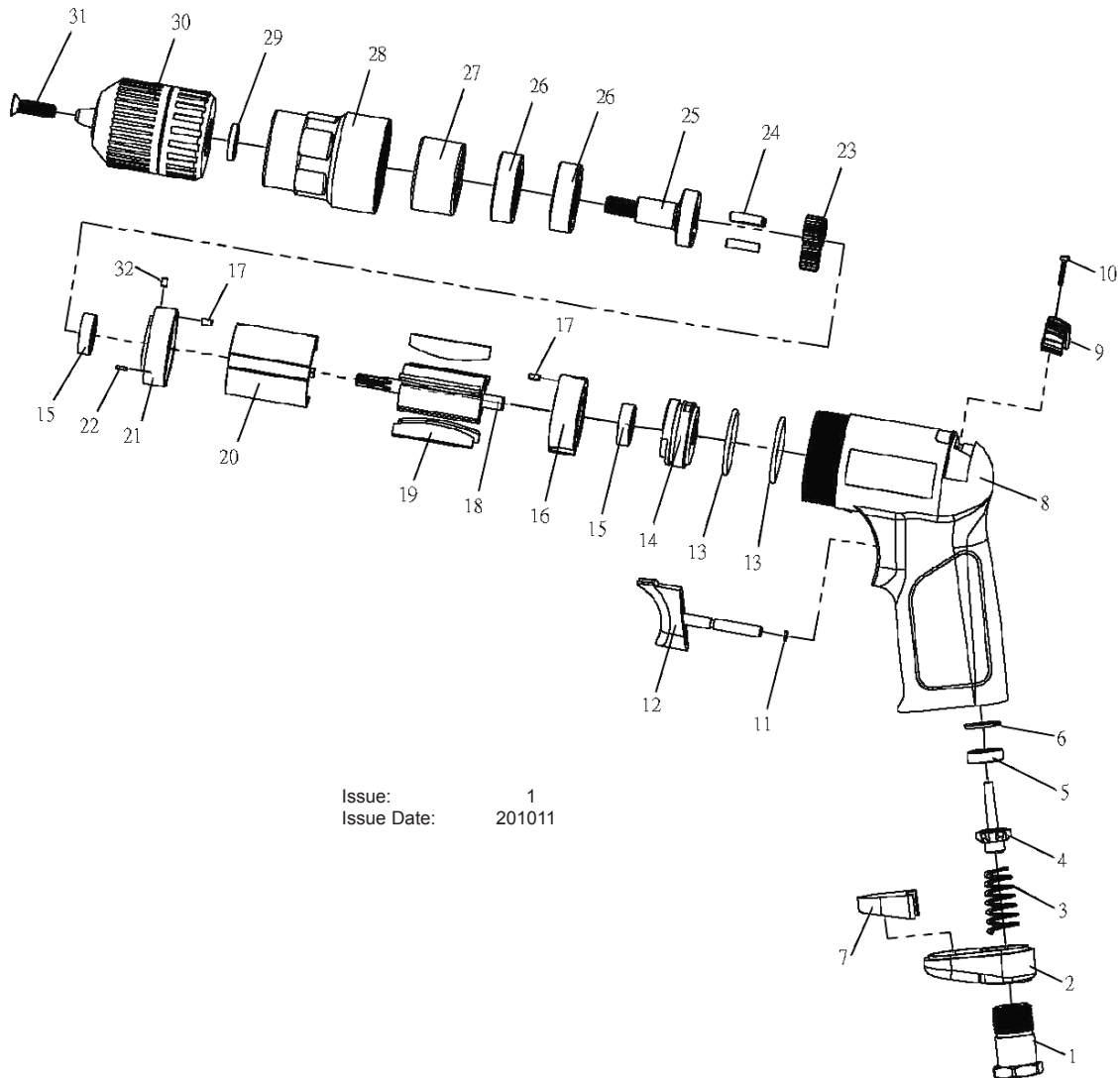


PARTS FOR:  
**AIR PISTOL DRILL WITH 10mm KEYLESS CHUCK COMPOSITE PREMIER**  
**MODEL: SA620.V2**



Issue: 1  
 Issue Date: 201011

ITEM	PART NO	DESCRIPTION	ITEM	PART NO	DESCRIPTION
1	SA620.V2-01	INLET BUSHING	17	SA620.V2-17	SPRING PIN
2	SA620.V2-02	DEFLECTOR	18	SA620.V2-18	ROTOR
3	SA620.V2-03	VALVE SPRING	19	SA620.V2-19	ROTOR BLADE
4	SA620.V2-04	VALVE	20	SA620.V2-20	CYLINDER
5	SA620.V2-05	VALVE SEAT	21	SA620.V2-21	FRONT PLATE
6	SA620.V2-06	SPACER	22	SA620.V2-22	PIN (1.5 X 4.8L)
7	SA620.V2-07	SILENCER	23	SA620.V2-23	IDLE GEAR
8	SA620.V2-08	HOUSING	24	SA620.V2-24	PIN (4X15.6)
9	SA620.V2-09	REVERSE VALVE LEVER	25	SA620.V2-25	WORK SPINDLE
10	SA620.V2-10	TAPPING SCREW (2.3X12L)	26	SA620.V2-26	BALL BEARING (6201ZZ)
11	SA620.V2-11	O-RING (3X1)	27	SA620.V2-27	RING GEAR
12	SA620.V2-12	TRIGGER	28	SA620.V2-28	FRONT HOUSING
13	SA620.V2-13	O-RING (27 X 2)	29	SA620.V2-29	CHUCK SPACER
14	SA620.V2-14	VALVE BODY	30	SA620.V2-30	KEYLESS CHUCK (3/8")
15	SA620.V2-15	BEARING (626)	31	SA620.V2-31	CHUCK SCREW
16	SA620.V2-16	REAR PLATE	32	SA620.V2-32	SPRING PIN (M2.5X4)

**NOTE:** It is our policy to continually improve products and as such we reserve the right to alter data, specifications and component parts without prior notice.

**IMPORTANT:** No liability is accepted for incorrect use of product.

**WARRANTY:** Guarantee is 12 months from purchase date, proof of which will be required for any claim.

**INFORMATION:** For a copy of our latest catalogue and promotions call us on 01284 757525 and leave your full name and address, including postcode.