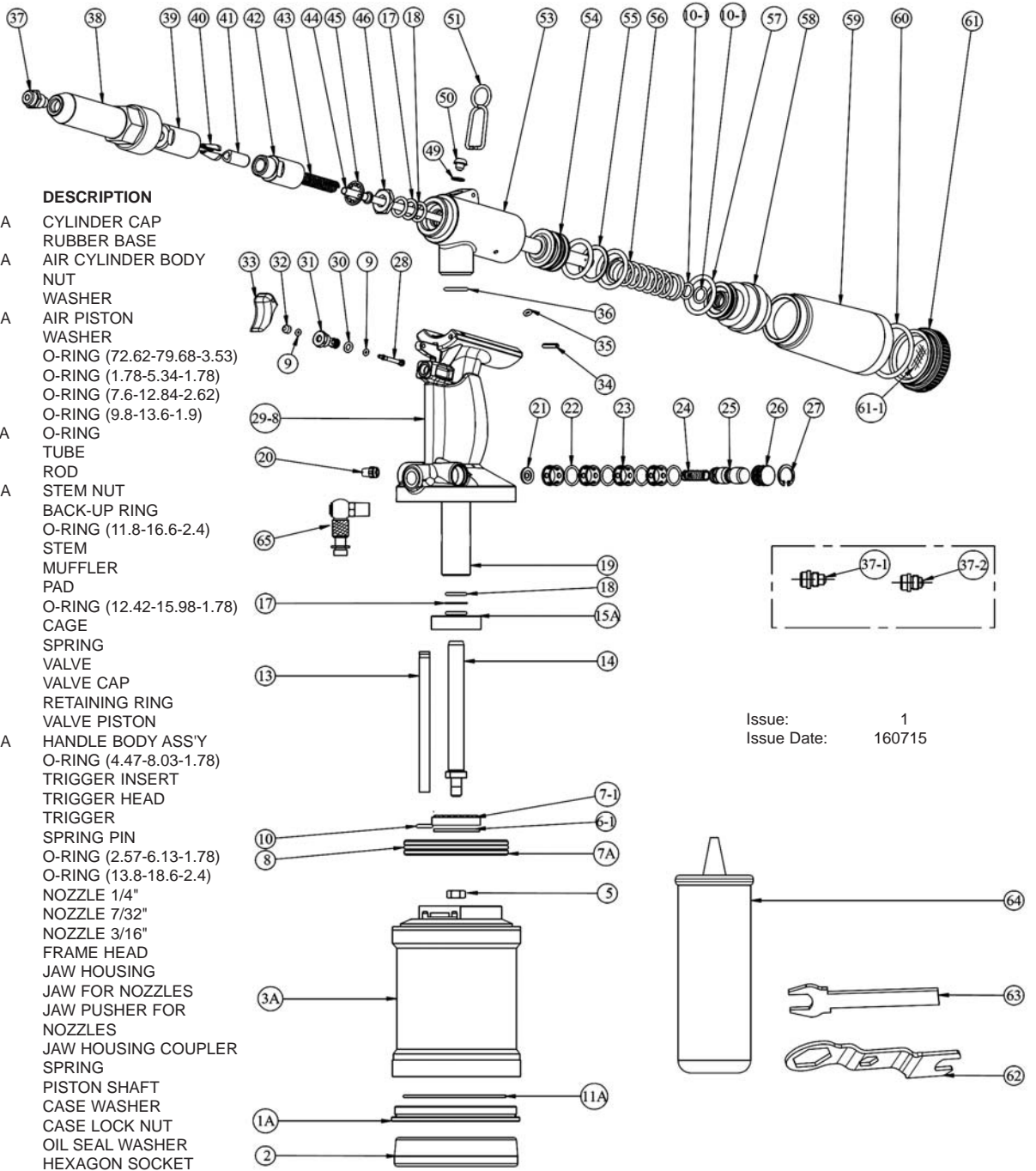




PARTS FOR:  
**AIR / HYDRAULIC RIVETER HEAVY-DUTY  
 VACUUM SYSTEM**  
 MODEL: **SA316.V3**

ITEM	PART NO	DESCRIPTION
1A	SA316.V3-01A	CYLINDER CAP
2	SA316.02	RUBBER BASE
3A	SA316.V3-03A	AIR CYLINDER BODY
5	SA316.05	NUT
6-1	SA316.6-1	WASHER
7A	SA316.V3-07A	AIR PISTON
7-1	SA316.7-1	WASHER
8	SA316.08	O-RING (72.62-79.68-3.53)
9	SA316.09	O-RING (1.78-5.34-1.78)
10	SA316.10	O-RING (7.6-12.84-2.62)
10-1	SA316.10-1	O-RING (9.8-13.6-1.9)
11A	SA316.V3-11A	O-RING
13	SA316.13	TUBE
14	SA316.14	ROD
15A	SA316.V3-15A	STEM NUT
17	SA316.17	BACK-UP RING
18	SA316.18	O-RING (11.8-16.6-2.4)
19	SA316.19	STEM
20	SA316.20	MUFFLER
21	SA316.21	PAD
22	SA316.22	O-RING (12.42-15.98-1.78)
23	SA316.23	CAGE
24	SA316.24	SPRING
25	SA316.25	VALVE
26	SA316.26	VALVE CAP
27	SA316.27	RETAINING RING
28	SA316.28	VALVE PISTON
29-8	SA316.V3-29A	HANDLE BODY ASS'Y
30	SA316.30	O-RING (4.47-8.03-1.78)
31	SA316.31	TRIGGER INSERT
32	SA316.32	TRIGGER HEAD
33	SA316.33	TRIGGER
34	SA316.34	SPRING PIN
35	SA316.35	O-RING (2.57-6.13-1.78)
36	SA316.36	O-RING (13.8-18.6-2.4)
37	SA316.37	NOZZLE 1/4"
37-1	SA316.37-1	NOZZLE 7/32"
37-2	SA316.37-2	NOZZLE 3/16"
38	SA316.38	FRAME HEAD
39	SA316.39	JAW HOUSING
40	SA316.40	JAW FOR NOZZLES
41	SA316.V2-41	JAW PUSHER FOR NOZZLES
42	SA316.42	JAW HOUSING COUPLER
43	SA316.V2-43	SPRING
44	SA316.V2-44	PISTON SHAFT
45	SA316.45	CASE WASHER
46	SA316.46	CASE LOCK NUT
49	SA316.49	OIL SEAL WASHER
50	SA316.50	HEXAGON SOCKET SCREW
51	SA316.51	HOOK
53	SA316.53	OIL CYLINDER BODY
54	SA316.54	PISTON ROD
55	SA316.55	O-RING
56	SA316.56	SPRING
57	SA316.57	O-RING (24.7-31.7-3.5)
58	SA316.58	FRAME CAP NUT
59	SA316.59	BOTTLE
60	SA316.60	O-RING (37.7-44.7-3.5)
61	SA316.61	BOTTLE ADAPTOR
61-1	SA316.61-1	SILENCER
62	SA316.62	SPANNER
63	SA316.63	SPANNER GAUGE
64	SA316.64	OIL CAN
65	SA316.65	VALVE



Issue: 1  
 Issue Date: 160715