

Thank you for purchasing a Sealey product. Manufactured to a high standard this product will, if used according to these instructions and properly maintained, give you years of trouble free performance.

**IMPORTANT: PLEASE READ THESE INSTRUCTIONS CAREFULLY. NOTE THE SAFE OPERATIONAL REQUIREMENTS, WARNINGS & CAUTIONS. USE THE PRODUCT CORRECTLY AND WITH CARE FOR THE PURPOSE FOR WHICH IT IS INTENDED. FAILURE TO DO SO MAY CAUSE DAMAGE AND/OR PERSONAL INJURY AND WILL INVALIDATE THE WARRANTY. PLEASE KEEP INSTRUCTIONS SAFE FOR FUTURE USE.**

## 1. SAFETY INSTRUCTIONS

- ✓ Ensure that the sweeper is only used on hard/dry surfaces.
- ✓ Ensure that the dirt collection hopper is present and properly seated before commencing sweeping.
- ✓ The sweeper is for indoor use only.
- ✗ Do not leave the sweeper unattended, where it could become a hazard to other people or traffic in the sweeping area. For example, in a warehouse situation.
- ✗ Do not allow anyone to ride on the sweeper.
- ✗ Do not use the sweeper for any purpose other than that for which it was designed.
- ✗ Do not use the sweeper to clear up hazardous materials or any material that may attack the plastic chassis of the sweeper.
- ✗ Do not use the sweeper on wet surfaces.

## 2. INTRODUCTION

Suitable for maintaining any hard floor and ideal for removing dirt, dust and debris from large surface areas. Features 4-brush system with two side brushes and two further brushes set underneath the unit to easily lift debris into the hopper. Fitted with tubular handle and adjustable castor wheel that raises the sweeper 20mm enabling larger pieces of debris to be swept up.

Model No. .... **FSW80**  
 Operating Width ..... 800mm  
 Hopper capacity ..... 40ltr

## 3. ASSEMBLY & USE

- 3.1 Lower Handle:** Take the lower handle tube and place the slots in the flattened ends over the threaded spigots on the handle brackets, see fig.1B. Ensure that the open slots at each end of the lower handle are engaged with the plain spigot on the mounting brackets. Retain the handle in place by screwing a black plastic knob onto each threaded spigot.
- 3.2 Upper Handle:** The upper handle has three alternative mounting holes in the flattened portions of the handle. Align the chosen mounting holes with the holes in the upper part of the lower handle and insert the supplied coach bolts through both frames and retain with the black plastic knobs supplied as shown in fig.1A.
- 3.3 Handle stowage:** The handle can be folded down for storage purposes. Loosen the lower mounting knobs and pull the handle upwards to disengage the slotted ends from the plain spigots on the mounting brackets. Hinge the handle forwards and allow it to rest on the body of the sweeper.
- 3.4 Circular brushes:** Attach each brush to its hub using the 6 screws provided (3 for each brush). Ensure each brush is correctly seated before tightening.
- 3.5 Use:** Ensure the handle height is correctly adjusted for the convenience of the operative. Make sure that the handle fixings are tight and the dirt collection hopper is properly seated within the main body of the sweeper. Work methodically up and down the area to be swept, ensuring that each 'pass' overlaps the previous one. To ensure the efficiency of the brushes, push the sweeper at a good, even pace. To capture larger pieces of debris the basic clearance of the sweeper can be raised a further 20mm by rotating the height adjuster seen in fig.1 clockwise. Check the hopper regularly by lifting it out. Empty it if required. Place it back into the sweeper as shown in fig.2. Periodically, clean the exterior of the sweeper with a damp cloth.

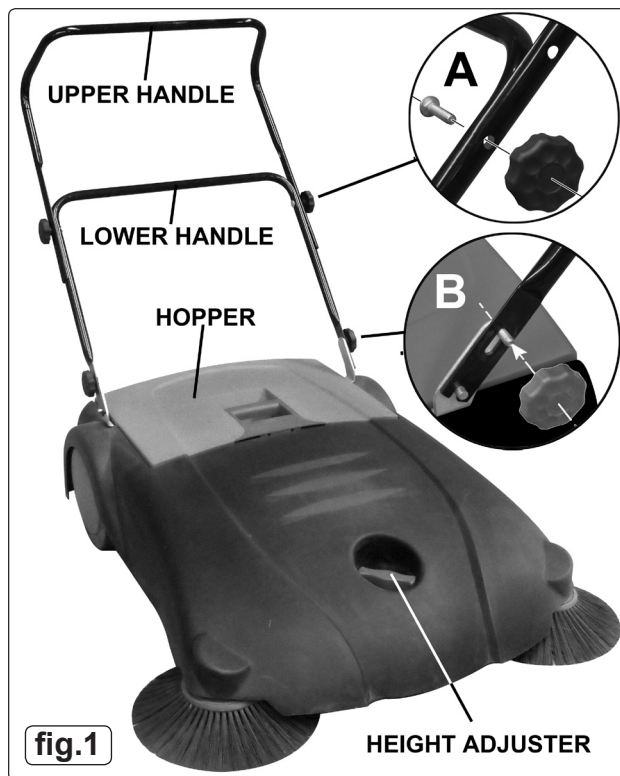


fig.1



fig.2

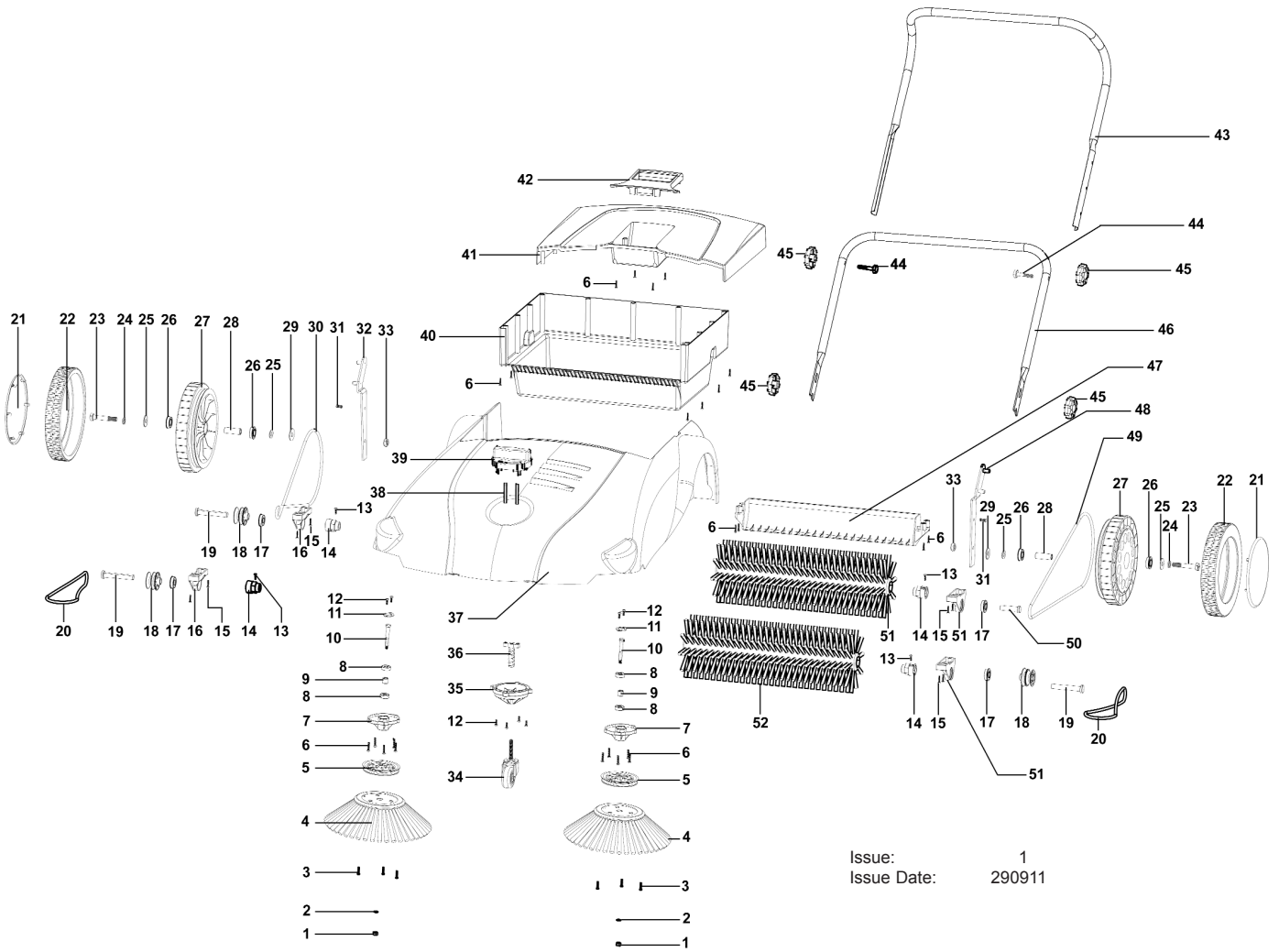
**NOTE:** It is our policy to continually improve products and as such we reserve the right to alter data, specifications and component parts without prior notice.

**IMPORTANT:** No liability is accepted for incorrect use of this product.

**WARRANTY:** Guarantee is 12 months from purchase date, proof of which will be required for any claim.

**INFORMATION:** For a copy of our latest catalogue and promotions call us on 01284 757525 and leave your full name and address, including postcode.





Issue: 1  
 Issue Date: 290911

ITEM	PART NO	DESCRIPTION	ITEM	PART NO	DESCRIPTION
1	FSW80.01	LOCK NUT (M6)	27	FSW80.27	INNER WHEEL
2	FSW80.02	WASHER	28	FSW80.28	SPINDLE
3	FSW80.03	SCREW (ST3.9x16)	29	FSW80.29	WASHER
4	FSW80.04	ROUND BRUSH	30	FSW80.30	RUBBER BELT (6x880)
5	FSW80.05	PULLEY	31	FSW80.31	SCREW (M6x8)
6	FSW80.06	SCREW (3.9x18)	32	FSW80.32	METAL FIXING (RIGHT)
7	FSW80.07	BRUSH SUPPORT	33	FSW80.33	NUT (M10)
8	FSW80.08	BEARING (608)	34	FSW80.34	CASTOR WHEEL
9	FSW80.09	BEARING COVER	35	FSW80.35	WHEEL HOLDER
10	FSW80.10	SPINDLE FOR ROUND BRUSH	36	FSW80.36	ADJUSTMENT SPINDLE
11	FSW80.11	BEARING COVER	37	FSW80.37	BODY
12	FSW80.12	SCREW (ST3.9x12)	38	FSW80.38	BOLT (6x50)
13	FSW80.13	SCREW (M4x16)	39	FSW80.39	HEIGHT ADJUSTABLE SWITCH
14	FSW80.14	ROLLER CONNECTOR	40	FSW80.40	COLLECTION TRAY (UPPER)
15	FSW80.15	SCREW (ST3.9x25)	41	FSW80.41	COLLECTION TRAY (LOWER)
16	FSW80.16	ROLLER SUPPORT (RIGHT)	42	FSW80.42	HANDLE FOR COLLECTION TRAY
17	FSW80.17	PUNCH BEARING	43	FSW80.43	HANDLE, UPPER
18	FSW80.18	BELT PULLEY	44	FSW80.44	SCREW (M8x30)
19	FSW80.19	SPINDLE	45	FSW80.45	HANDLE FIX NUT
20	FSW80.20	RUBBER BELT (6x525)	46	FSW80.46	HANDLE, LOWER
21	FSW80.21	WHEEL COVER	47	FSW80.47	ROLLER BRUSH COVER
22	FSW80.22	WHEEL	48	FSW80.48	METAL FIXING (LEFT)
23	FSW80.23	HEX SCREW (M10x65)	49	FSW80.49	RUBBER BELT (6x1120)
24	FSW80.24	SPRING WASHER	50	FSW80.50	ROLLER SPINDLE
25	FSW80.25	WASHER	51	FSW80.51	ROLLER SUPPORT (LEFT)
26	FSW80.26	STEEL COVER	52	FSW80.52	ROLLER BRUSH

**NOTE:** It is our policy to continually improve products and as such we reserve the right to alter data, specifications and component parts without prior notice.

**IMPORTANT:** No liability is accepted for incorrect use of product.

**WARRANTY:** Guarantee is 12 months from purchase date, proof of which will be required for any claim.

**INFORMATION:** For a copy of our latest catalogue and promotions call us on 01284 757525 and leave your full name and address, including postcode.